

# PCED1A Antibody



PACO40786

---

## Product Information

**Size:**

50ug

**Reactivity:**

Human

**Source:**

Rabbit

**Isotype:**

IgG

**Applications:**

ELISA, IHC

**Recommended dilutions:**

ELISA:1:2000-1:10000, IHC:1:20-1:200

**Protein Background:**

**Gene ID:**

PCED1A

**Uniprot**

Q9H1Q7

**Synonyms:**

PC-esterase domain-containing protein 1A (Protein FAM113A) (Sarcoma antigen NY-SAR-23), PCED1A, C20orf81 FAM113A

**Immunogen:**

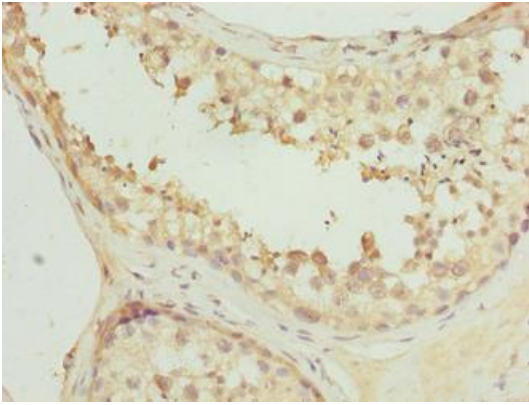
Recombinant Human PC-esterase domain-containing protein 1A protein (6-312AA).

**Storage:**

Preservative: 0.03% Proclin 300. Constituents: 50% Glycerol, 0.01M PBS, PH 7.4

## Product Images

---



Immunohistochemistry of paraffin-embedded human testis tissue using PACO40786 at dilution of 1:100.