

# SPATC1L Antibody



PACO40778

---

## Product Information

**Size:**

50ug

**Reactivity:**

Human

**Source:**

Rabbit

**Isotype:**

IgG

**Applications:**

ELISA, IHC, IF

**Recommended dilutions:**

ELISA:1:2000-1:10000, IHC:1:20-1:200,  
IF:1:50-1:200

**Protein Background:**

**Gene ID:**

SPATC1L

**Uniprot**

Q9H0A9

**Synonyms:**

Speriolin-like protein (Spermatogenesis and centriole-associated protein 1-like protein),  
SPATC1L, C21orf56

**Immunogen:**

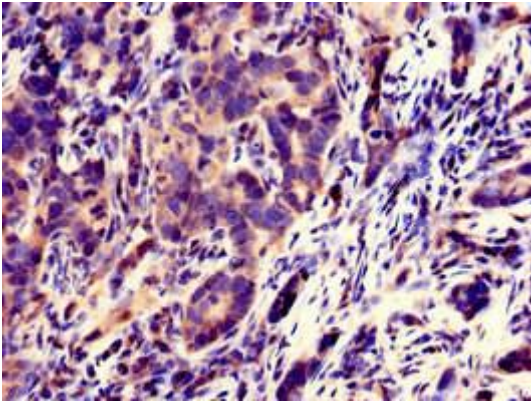
Recombinant Human Speriolin-like protein (1-186AA).

**Storage:**

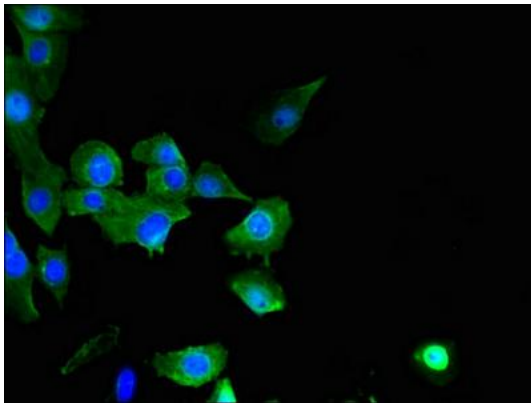
Preservative: 0.03% Proclin 300. Constituents: 50% Glycerol, 0.01M PBS, PH 7.4

## Product Images

---



Immunohistochemistry of paraffin-embedded human pancreatic cancer using PACO40778 at dilution of 1:100.



Immunofluorescent analysis of U251 cells using PACO40778 at dilution of 1:100 and Alexa Fluor 488-conjugated AffiniPure Goat Anti-Rabbit IgG(H+L).