

# ROGDI Antibody



PACO40770

---

## Product Information

**Size:**

50ug

**Reactivity:**

Human

**Source:**

Rabbit

**Isotype:**

IgG

**Applications:**

ELISA, WB, IHC

**Recommended dilutions:**

ELISA:1:2000-1:10000, WB:1:500-1:2000,  
IHC:1:20-1:200

**Protein Background:**

May act as a positive regulator of cell proliferation.

**Gene ID:**

ROGDI

**Uniprot**

Q9GZN7

**Synonyms:**

Protein rogdi homolog, ROGDI

**Immunogen:**

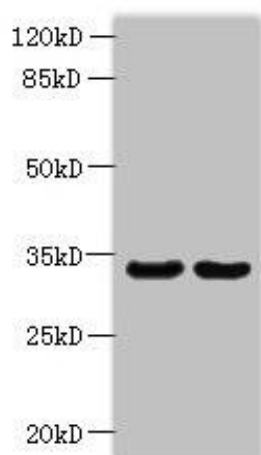
Recombinant Human Protein rogdi homolog protein (14-287AA).

**Storage:**

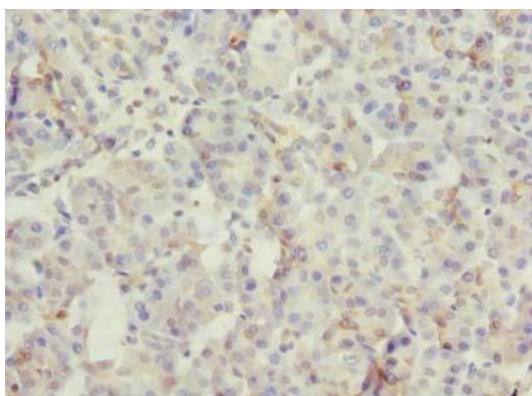
Preservative: 0.03% Proclin 300. Constituents: 50% Glycerol, 0.01M PBS, PH 7.4

## Product Images

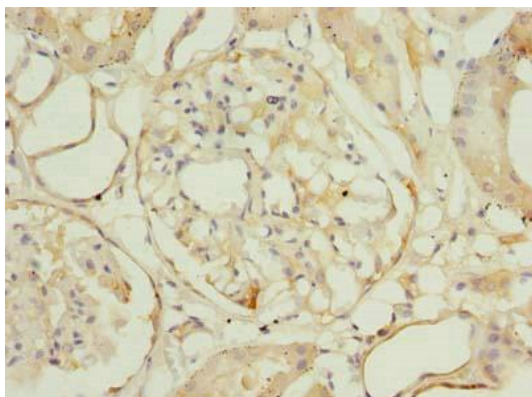
---



Western blot. All lanes: ROGDI antibody at 1.2 $\mu$ g/ml. Lane 1: HeLa whole cell lysate. Lane 2: K562 whole cell lysate. Secondary: Goat polyclonal to rabbit IgG at 1/10000 dilution. Predicted band size: 33 kDa. Observed band size: 33 kDa.



Immunohistochemistry of paraffin-embedded human pancreatic tissue using PACO40770 at dilution of 1:100.



Immunohistochemistry of paraffin-embedded human kidney tissue using PACO40770 at dilution of 1:100.