

GPR83 Antibody



PACO40682

Product Information

Size:

50ug

Reactivity:

Human

Source:

Rabbit

Isotype:

IgG

Applications:

ELISA, WB, IF

Recommended dilutions:

ELISA:1:2000-1:10000, WB:1:1000-1:5000,
IF:1:50-1:200

Protein Background:

Orphan receptor. Could be a neuropeptide Y receptor.

Gene ID:

GPR83

Uniprot

Q9NYM4

Synonyms:

Probable G-protein coupled receptor 83 (G-protein coupled receptor 72), GPR83, GPR72 KIAA1540

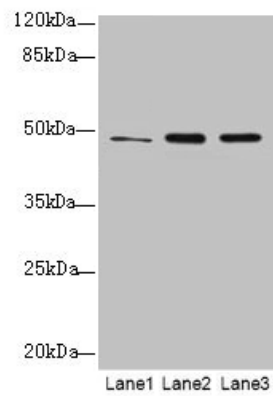
Immunogen:

Recombinant Human Probable G-protein coupled receptor 83 protein (349-423AA).

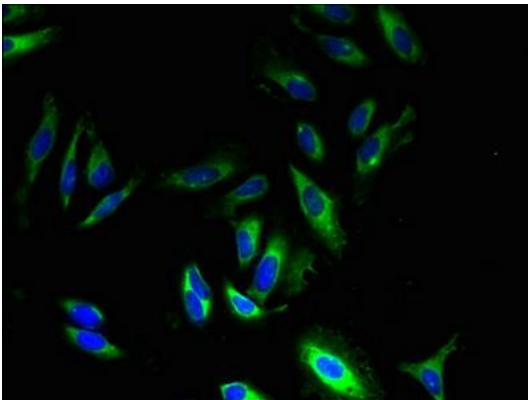
Storage:

Preservative: 0.03% Proclin 300. Constituents: 50% Glycerol, 0.01M PBS, PH 7.4

Product Images



Western blot. All lanes: GPR83 antibody at 2 μ g/ml. Lane 1: HCT116 whole cell lysate. Lane 2: U87 whole cell lysate. Lane 3: MCF-7 whole cell lysate. Secondary. Goat polyclonal to rabbit IgG at 1/10000 dilution. Predicted band size: 49 kDa. Observed band size: 49 kDa.



Immunofluorescent analysis of HeLa cells using PACO40682 at dilution of 1:100 and Alexa Fluor 488-conjugated AffiniPure Goat Anti-Rabbit IgG(H+L).