

# OSER1 Antibody



PACO40678

---

## Product Information

**Size:**

50ug

**Reactivity:**

Human, Mouse

**Source:**

Rabbit

**Isotype:**

IgG

**Applications:**

ELISA, WB, IHC

**Recommended dilutions:**

ELISA:1:2000-1:10000, WB:1:1000-1:5000,  
IHC:1:20-1:200

**Protein Background:**

**Gene ID:**

OSER1

**Uniprot**

Q9NX31

**Synonyms:**

Oxidative stress-responsive serine-rich protein 1 (Oxidative stress-responsive protein 1) (Peroxide-inducible transcript 1 protein), OSER1, C20orf111

**Immunogen:**

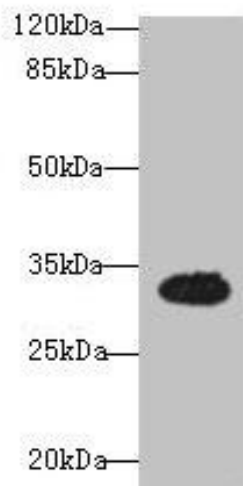
Recombinant Human Oxidative stress-responsive serine-rich protein 1 protein (1-292AA).

**Storage:**

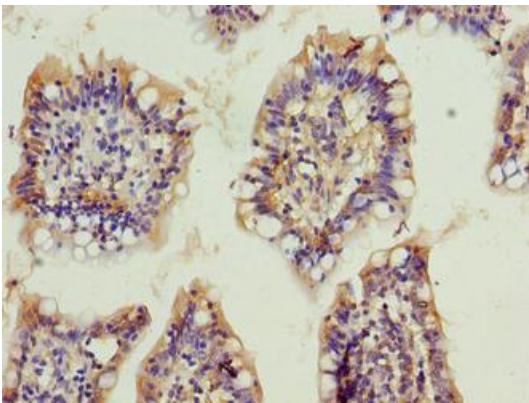
Preservative: 0.03% Proclin 300. Constituents: 50% Glycerol, 0.01M PBS, PH 7.4

## Product Images

---



Western blot. All lanes: OSER1 antibody at 3 $\mu$ g/ml + Mouse liver tissue. Secondary. Goat polyclonal to rabbit IgG at 1/10000 dilution. Predicted band size: 32 kDa. Observed band size: 32 kDa.



Immunohistochemistry of paraffin-embedded human small intestine tissue using PACO40678 at dilution of 1:100.