

PACO40642

Product Information

Size:

50ug

Reactivity:

Human

Source:

Rabbit

Isotype:

IgG

Applications:

ELISA, WB, IHC, IP

Recommended dilutions:

ELISA:1:2000-1:10000, WB:1:500-1:5000,
IHC:1:20-1:200, IP:1:200-1:2000

Protein Background:

Catalyzes the ATP-dependent amination of UTP to CTP with either L-glutamine or ammonia as the source of nitrogen. Constitutes the rate-limiting enzyme in the synthesis of cytosine nucleotides.

Gene ID:

CTPS2

Uniprot

Q9NRF8

Synonyms:

CTP synthase 2 (EC 6.3.4.2) (CTP synthetase 2) (UTP--ammonia ligase 2), CTPS2

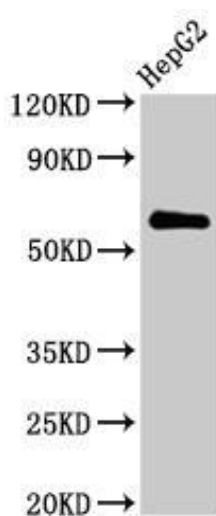
Immunogen:

Recombinant Human CTP synthase 2 protein (62-315AA).

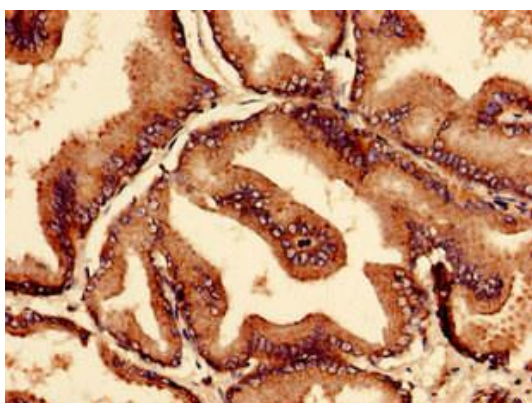
Storage:

Preservative: 0.03% Proclin 300. Constituents: 50% Glycerol, 0.01M PBS, PH 7.4

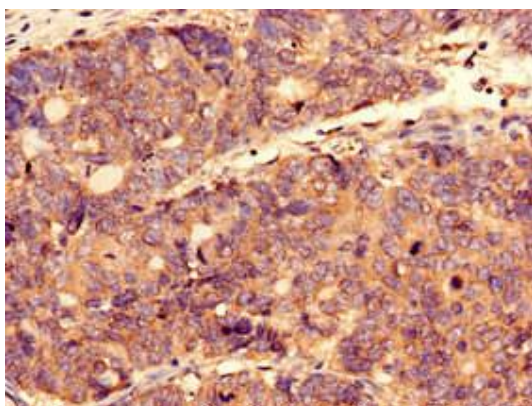
Product Images



Western Blot. Positive WB detected in: HepG2 whole cell lysate. All lanes: CTPS2 antibody at 2.8 μ g/ml. Secondary. Goat polyclonal to rabbit IgG at 1/50000 dilution. Predicted band size: 66 kDa. Observed band size: 66 kDa.



Immunocytochemistry analysis of human prostate tissue using PACO40642 at dilution of 1:100.



Immunocytochemistry analysis of human gastric cancer using PACO40642 at dilution of 1:100.