

CABP5 Antibody



PACO40626

Product Information

Size:

50ug

Reactivity:

Human, Mouse

Source:

Rabbit

Isotype:

IgG

Applications:

ELISA, WB

Recommended dilutions:

ELISA:1:2000-1:10000, WB:1:1000-1:5000

Protein Background:

Inhibits calcium-dependent inactivation of L-type calcium channel and shifts voltage dependence of activation to more depolarized membrane potentials. Involved in the transmission of light signals.

Gene ID:

CABP5

Uniprot

Q9NP86

Synonyms:

Calcium-binding protein 5 (CaBP5), CABP5, CABP3

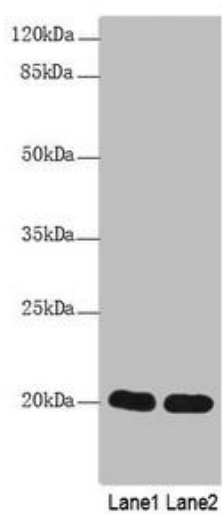
Immunogen:

Recombinant Human Calcium-binding protein 5 protein (1-173AA).

Storage:

Preservative: 0.03% Proclin 300. Constituents: 50% Glycerol, 0.01M PBS, PH 7.4

Product Images



Western Blot. All lanes: CABP5 antibody at 12 μ g/ml. Lane 1: Mouse kidney tissue. Lane 2: Mouse thymus tissue. Secondary. Goat polyclonal to rabbit IgG at 1/10000 dilution. Predicted band size: 20 kDa. Observed band size: 20 kDa.