

SPACA1 Antibody



PACO40610

Product Information

Size:

50ug

Reactivity:

Human

Source:

Rabbit

Isotype:

IgG

Applications:

ELISA, IHC

Recommended dilutions:

ELISA:1:2000-1:10000, IHC:1:20-1:200

Protein Background:

May be involved in sperm-egg fusion.

Gene ID:

SPACA1

Uniprot

Q9HBV2

Synonyms:

Sperm acrosome membrane-associated protein 1 (Sperm acrosomal membrane-associated protein 32), SPACA1, SAMP32

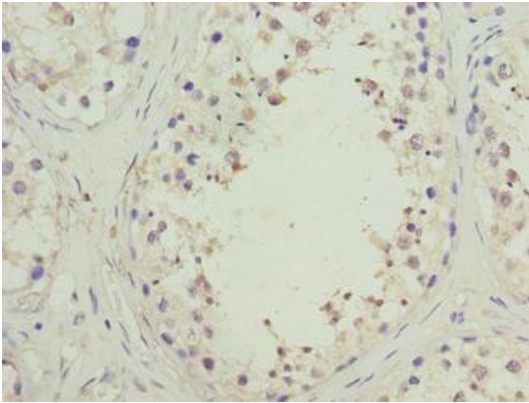
Immunogen:

Recombinant Human Sperm acrosome membrane-associated protein 1 protein (30-221AA).

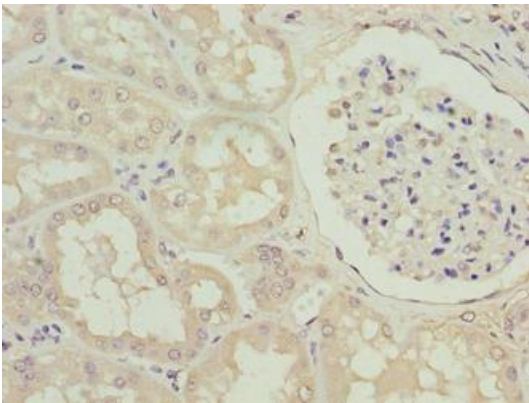
Storage:

Preservative: 0.03% Proclin 300. Constituents: 50% Glycerol, 0.01M PBS, PH 7.4

Product Images



Immunohistochemistry of paraffin-embedded human testis tissue using PACO40610 at dilution of 1:100.



Immunohistochemistry of paraffin-embedded human kidney tissue using PACO40610 at dilution of 1:100.