

MRPL44 Antibody



PACO40598

Product Information

Size:

50ug

Reactivity:

Human

Source:

Rabbit

Isotype:

IgG

Applications:

ELISA, WB, IHC

Recommended dilutions:

ELISA:1:2000-1:10000, WB:1:500-1:2000,
IHC:1:20-1:200

Protein Background:

Component of the 39S subunit of mitochondrial ribosome. May have a function in the assembly/stability of nascent mitochondrial polypeptides exiting the ribosome.

Gene ID:

MRPL44

Uniprot

Q9H9J2

Synonyms:

39S ribosomal protein L44, mitochondrial (L44mt) (MRP-L44) (EC 3.1.26. -)
(Mitochondrial large ribosomal subunit protein mL44), MRPL44

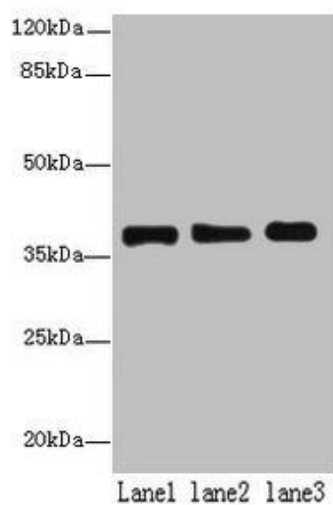
Immunogen:

Recombinant Human 39S ribosomal protein L44, mitochondrial protein (31-332AA).

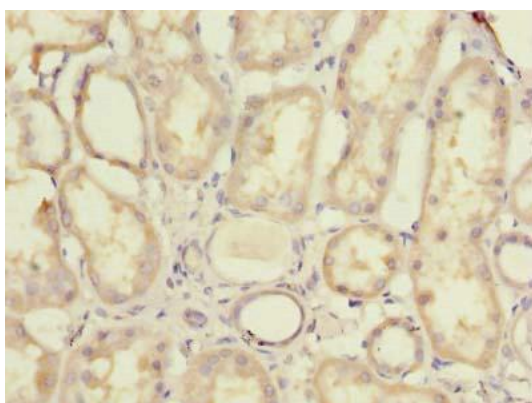
Storage:

Preservative: 0.03% Proclin 300. Constituents: 50% Glycerol, 0.01M PBS, PH 7.4

Product Images



Western blot. All lanes: MRPL44 antibody at 6 μ g/ml. Lane 1: HeLa whole cell lysate. Lane 2: Jurkat whole cell lysate. Lane 3: K562 whole cell lysate. Secondary: Goat polyclonal to rabbit IgG at 1/10000 dilution. Predicted band size: 38 kDa. Observed band size: 38 kDa.



Immunohistochemistry of paraffin-embedded human kidney tissue using PACO40598 at dilution of 1:100.