

ASB8 Antibody



PACO40590

Product Information

Size:

50ug

Reactivity:

Human

Source:

Rabbit

Isotype:

IgG

Applications:

ELISA, WB, IHC

Recommended dilutions:

ELISA:1:2000-1:10000, WB:1:500-1:2000,
IHC:1:20-1:200

Protein Background:

May be a substrate-recognition component of a SCF-like ECS (Elongin-Cullin-SOCS-box protein) E3 ubiquitin-protein ligase complex which mediates the ubiquitination and subsequent proteasomal degradation of target proteins.

Gene ID:

ASB8

Uniprot

Q9H765

Synonyms:

Ankyrin repeat and SOCS box protein 8 (ASB-8), ASB8

Immunogen:

Recombinant Human Ankyrin repeat and SOCS box protein 8 protein (12-288AA).

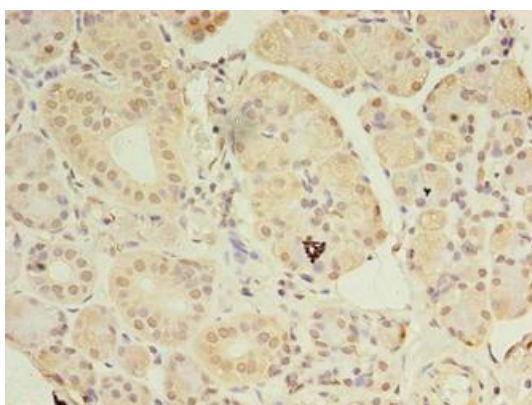
Storage:

Preservative: 0.03% Proclin 300. Constituents: 50% Glycerol, 0.01M PBS, PH 7.4

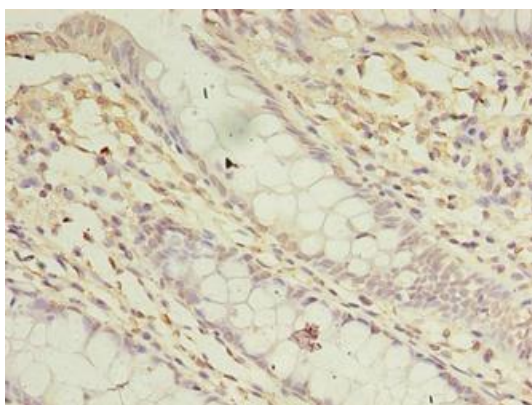
Product Images



Western blot. All lanes: ASB8 antibody at 1 μ g/ml + Human placenta tissue. Secondary. Goat polyclonal to rabbit IgG at 1/10000 dilution. Predicted band size: 32 kDa. Observed band size: 32 kDa.



Immunohistochemistry of paraffin-embedded human pancreatic tissue using PACO40590 at dilution of 1:100.



Immunohistochemistry of paraffin-embedded human colon cancer using PACO40590 at dilution of 1:100.