

GAREM1 Antibody



PACO40586

Product Information

Size:

50ug

Reactivity:

Human

Source:

Rabbit

Isotype:

IgG

Applications:

ELISA, IHC, IF

Recommended dilutions:

ELISA:1:2000-1:10000, IHC:1:20-1:200,
IF:1:50-1:200

Protein Background:

Isoform 1: Acts as an adapter protein that plays a role in intracellular signaling cascades triggered either by the cell surface activated epidermal growth factor receptor and/or cytoplasmic protein tyrosine kinases. Promotes activation of the MAPK/ERK signaling pathway. Plays a role in the regulation of cell proliferation.

Gene ID:

GAREM1

Uniprot

Q9H706

Synonyms:

GRB2-associated and regulator of MAPK protein 1 (GRB2-associated and regulator of MAPK1), GAREM1, C18orf11 FAM59A GAREM

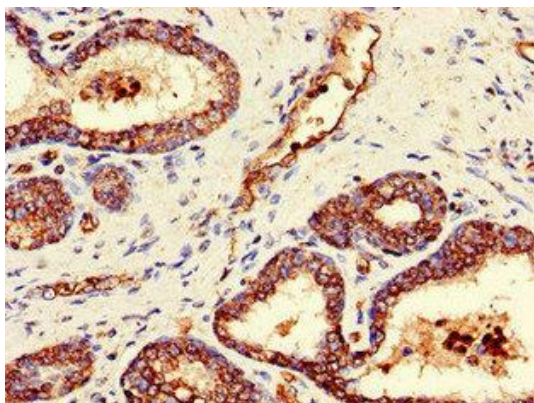
Immunogen:

Recombinant Human GRB2-associated and regulator of MAPK protein (12-320AA).

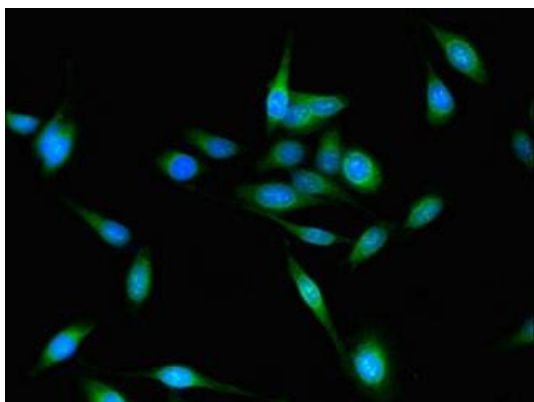
Storage:

Preservative: 0.03% Proclin 300. Constituents: 50% Glycerol, 0.01M PBS, PH 7.4

Product Images



Immunohistochemistry of paraffin-embedded human prostate cancer using PACO40586 at dilution of 1:100.



Immunofluorescent analysis of HeLa cells using PACO40586 at dilution of 1:100 and Alexa Fluor 488-conjugated AffiniPure Goat Anti-Rabbit IgG(H+L).