

PACO40582

Product Information

Size:

50ug

Reactivity:

Human

Source:

Rabbit

Isotype:

IgG

Applications:

ELISA, WB, IHC, IF

Recommended dilutions:

ELISA:1:2000-1:10000, WB:1:500-1:5000,
IHC:1:20-1:200, IF:1:50-1:200

Protein Background:

Component of the cytosolic iron-sulfur protein assembly (CIA) complex, a multiprotein complex that mediates the incorporation of iron-sulfur cluster into extramitochondrial Fe/S proteins. Seems to negatively regulate the level of HIF1A expression, although this effect could be indirect.

Gene ID:

CIAO3

Uniprot

Q9H6Q4

Synonyms:

Cytosolic iron-sulfur assembly component 3, Cytosolic Fe-S cluster assembly factor NARFL (Iron-only hydrogenase-like protein 1) (IOP1) (Nuclear prelamin A recognition factor-like protein) (Protein related to Narf), CIAO3, NARFL, PRN

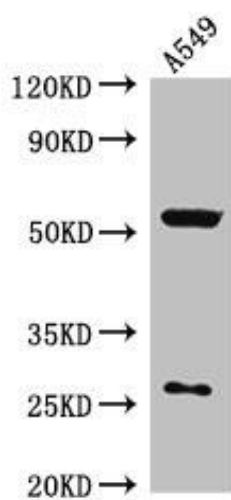
Immunogen:

Recombinant Human Cytosolic iron-sulfur assembly component 3 protein (2-265AA).

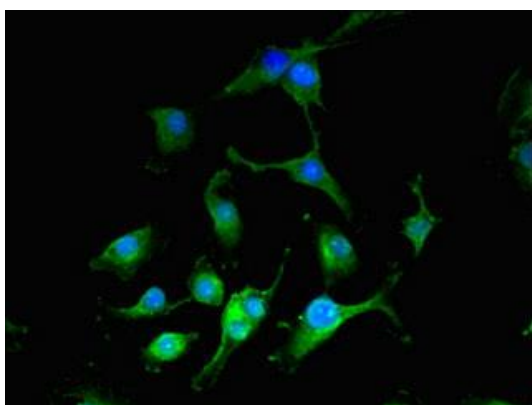
Storage:

Preservative: 0.03% Proclin 300. Constituents: 50% Glycerol, 0.01M PBS, PH 7.4

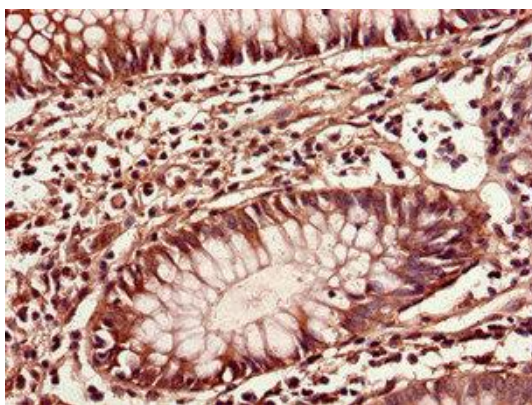
Product Images



Western Blot. Positive WB detected in: A549 whole cell lysate. All lanes: CIAO3 antibody at 2.7 μ g/ml. Secondary. Goat polyclonal to rabbit IgG at 1/50000 dilution. Predicted band size: 54, 27, 43 kDa. Observed band size: 54, 27 kDa.



Immunofluorescent analysis of U251 cells using PACO40582 at dilution of 1:100 and Alexa Fluor 488-conjugated AffiniPure Goat Anti-Rabbit IgG(H+L).



Immunohistochemistry of paraffin-embedded human colon cancer using PACO40582 at dilution of 1:100.