

MFSD1 Antibody



PACO40562

Product Information

Size:

50ug

Reactivity:

Human

Source:

Rabbit

Isotype:

IgG

Applications:

ELISA, IHC, IF

Recommended dilutions:

ELISA:1:2000-1:10000, IHC:1:20-1:200,
IF:1:50-1:200

Protein Background:

integral component of membrane, substrate-specific transmembrane transporter activity, transmembrane transport.

Gene ID:

MFSD1

Uniprot

Q9H3U5

Synonyms:

Major facilitator superfamily domain-containing protein 1 (Smooth muscle cell-associated protein 4) (SMAP-4), MFSD1, SMAP4

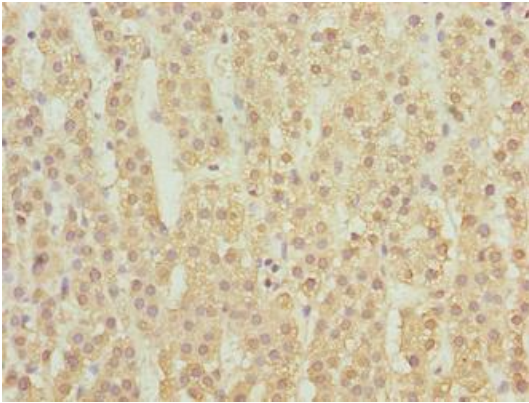
Immunogen:

Recombinant Human Major facilitator superfamily domain-containing protein 1 protein (1-38AA).

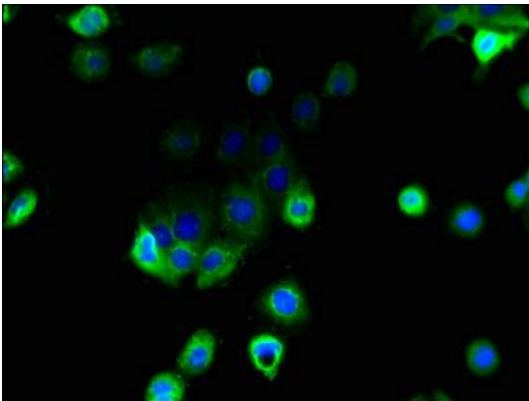
Storage:

Preservative: 0.03% Proclin 300. Constituents: 50% Glycerol, 0.01M PBS, PH 7.4

Product Images



Immunohistochemistry of paraffin-embedded human adrenal gland tissue using PACO40562 at dilution of 1:100.



Immunofluorescent analysis of A431 cells using PACO40562 at dilution of 1:100 and Alexa Fluor 488-conjugated AffiniPure Goat Anti-Rabbit IgG(H+L).