

CCDC106 Antibody



PACO40498

Product Information

Size:

50ug

Reactivity:

Human, Mouse

Source:

Rabbit

Isotype:

IgG

Applications:

ELISA, WB, IHC

Recommended dilutions:

ELISA:1:2000-1:10000, WB:1:500-1:2000,
IHC:1:20-1:200

Protein Background:

Promotes the degradation of p53/TP53 protein and inhibits its transactivity.

Gene ID:

CCDC106

Uniprot

Q9BWC9

Synonyms:

Coiled-coil domain-containing protein 106, CCDC106

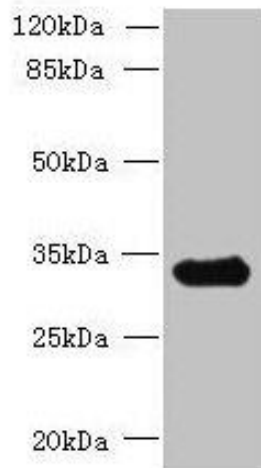
Immunogen:

Recombinant Human Coiled-coil domain-containing protein 106 protein (1-280AA).

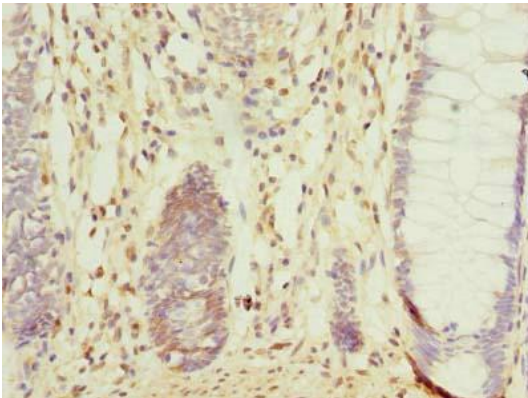
Storage:

Preservative: 0.03% Proclin 300. Constituents: 50% Glycerol, 0.01M PBS, PH 7.4

Product Images



Western blot. All lanes: CCDC106 antibody at 4 μ g/ml + Mouse brain tissue. Secondary. Goat polyclonal to rabbit IgG at 1/10000 dilution. Predicted band size: 33 kDa. Observed band size: 33 kDa.



Immunohistochemistry of paraffin-embedded human colon cancer using PACO40498 at dilution of 1:100.