

PACO40490

Product Information

Size:

50ug

Reactivity:

Human

Source:

Rabbit

Isotype:

IgG

Applications:

ELISA, IHC, IF

Recommended dilutions:

ELISA:1:2000-1:10000, IHC:1:20-1:200,
IF:1:50-1:500

Protein Background:

Inactivates MAPK1 and MAPK3 which leads to dephosphorylation of heat shock factor protein 4 and a reduction in its DNA-binding activity. Inhibits MAP kinase p38 by dephosphorylating it and inhibits p38-mediated apoptosis in anaplastic thyroid cancer cells. Can also induce activation of MAP kinase p38 and c-Jun N-terminal kinase (JNK).

Gene ID:

DUSP26

Uniprot

Q9BV47

Synonyms:

Dual specificity protein phosphatase 26 (EC 3.1.3.16) (EC 3.1.3.48) (Dual specificity phosphatase SKRP3) (Low-molecular-mass dual-specificity phosphatase 4) (DSP-4) (LDP-4) (Mitogen-activated protein kinase phosphatase 8) (MAP kinase phosphatase 8) (MKP-8) (Novel amplified gene in thyroid anaplastic cancer), DUSP26, DUSP24 LDP4 MKP8 NATA1 SKRP3

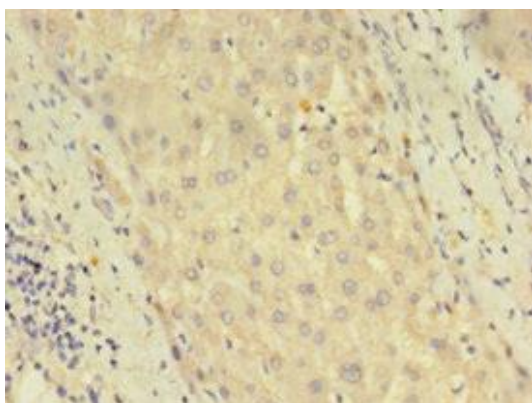
Immunogen:

Recombinant Human Dual specificity protein phosphatase 26 protein (1-211AA).

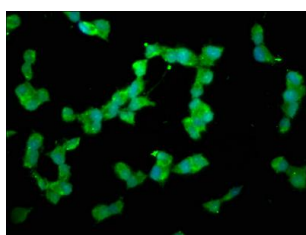
Storage:

Preservative: 0.03% Proclin 300. Constituents: 50% Glycerol, 0.01M PBS, PH 7.4

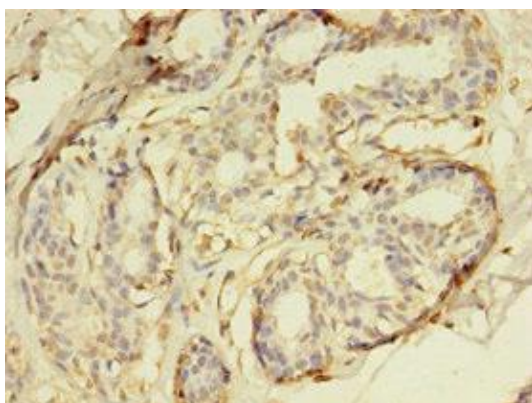
Product Images



Immunohistochemistry of paraffin-embedded human liver tissue using PACO40490 at dilution of 1:100.



Immunofluorescence staining of SH-SY5Y cells with PACO40490 at 1:200, counter-stained with DAPI. The cells were fixed in 4% formaldehyde, permeabilized using 0.2% Triton X-100 and blocked in 10% normal Goat Serum. The cells were then incubated with the antibody overnight at 4°C. The secondary antibody was Alexa Fluor 488-conjugated AffiniPure Goat Anti-Rabbit IgG(H+L).



Immunohistochemistry of paraffin-embedded human breast cancer using PACO40490 at dilution of 1:100.