

TM2D3 Antibody



PACO40474

Product Information

Size:

50ug

Reactivity:

Human

Source:

Rabbit

Isotype:

IgG

Applications:

ELISA, IHC, IF

Recommended dilutions:

ELISA:1:2000-1:10000, IHC:1:20-1:200,
IF:1:50-1:200

Protein Background:

Gene ID:

TM2D3

Uniprot

Q9BRN9

Synonyms:

TM2 domain-containing protein 3 (Beta-amyloid-binding protein-like protein 2) (BBP-like protein 2), TM2D3, BLP2

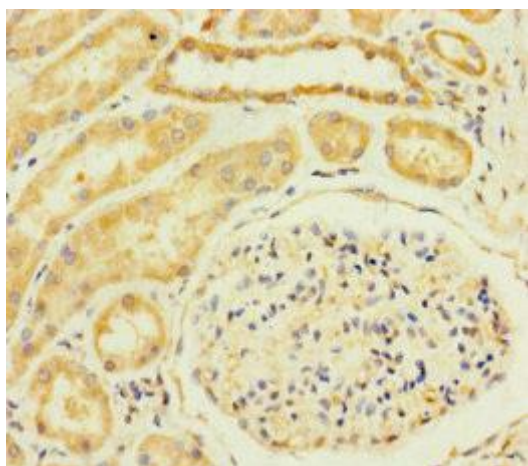
Immunogen:

Recombinant Human TM2 domain-containing protein 3 protein (31-153AA).

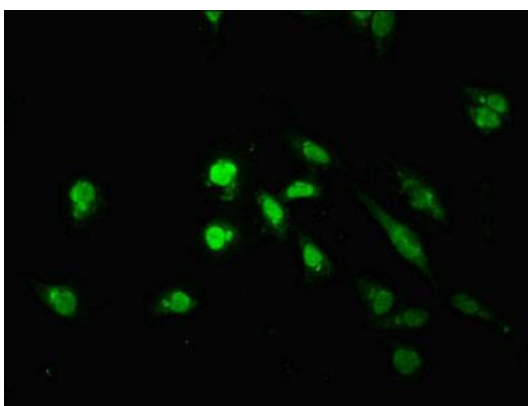
Storage:

Preservative: 0.03% Proclin 300. Constituents: 50% Glycerol, 0.01M PBS, PH 7.4

Product Images



Immunohistochemistry of paraffin-embedded human kidney tissue using PACO40474 at dilution of 1:100.



Immunofluorescent analysis of HeLa cells using PACO40474 at dilution of 1:100 and Alexa Fluor 488-conjugated AffiniPure Goat Anti-Rabbit IgG(H+L).