

METTL7A Antibody



PACO40430

Product Information

Size:

50ug

Reactivity:

Human

Source:

Rabbit

Isotype:

IgG

Applications:

ELISA, IHC

Recommended dilutions:

ELISA:1:2000-1:10000, IHC:1:20-1:200

Protein Background:

Probable methyltransferase.

Gene ID:

METTL7A

Uniprot

Q9H8H3

Synonyms:

Methyltransferase-like protein 7A (EC 2.1.1. -) (Protein AAM-B), METTL7A

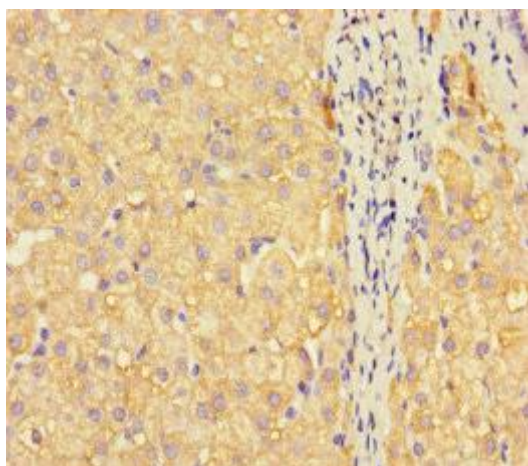
Immunogen:

Recombinant Human Methyltransferase-like protein 7A protein (30-244AA).

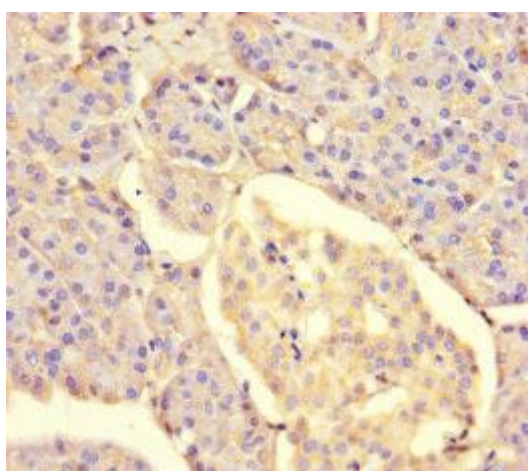
Storage:

Preservative: 0.03% Proclin 300. Constituents: 50% Glycerol, 0.01M PBS, PH 7.4

Product Images



Immunohistochemistry of paraffin-embedded human liver cancer using PACO40430 at dilution of 1:100.



Immunohistochemistry of paraffin-embedded human pancreatic tissue using PACO40430 at dilution of 1:100.