

## Product Information

**Size:**

50ug

**Reactivity:**

Human

**Source:**

Rabbit

**Isotype:**

IgG

**Applications:**

ELISA, IHC

**Recommended dilutions:**

ELISA:1:2000-1:10000, IHC:1:20-1:200

**Protein Background:**

Initiates the endoplasmic reticulum-associated degradation (ERAD) that targets misfolded glycoproteins for degradation in an N-glycan-dependent manner. Catalyzes the first mannose trimming step, from Man9GlcNAc2 to Man8GlcNAc2. Extracts misfolded glycoproteins, but not glycoproteins undergoing productive folding, from the calnexin cycle.

**Gene ID:**

EDEM2

**Uniprot**

Q9BV94

**Synonyms:**

ER degradation-enhancing alpha-mannosidase-like protein 2, EDEM2, C20orf31, C20orf49

**Immunogen:**

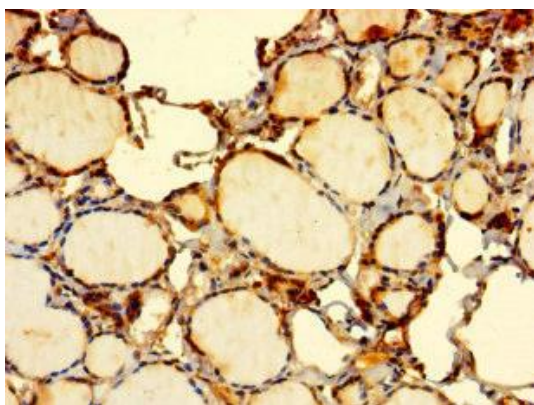
Recombinant Human ER degradation-enhancing alpha-mannosidase-like protein 2 protein (22-300AA).

**Storage:**

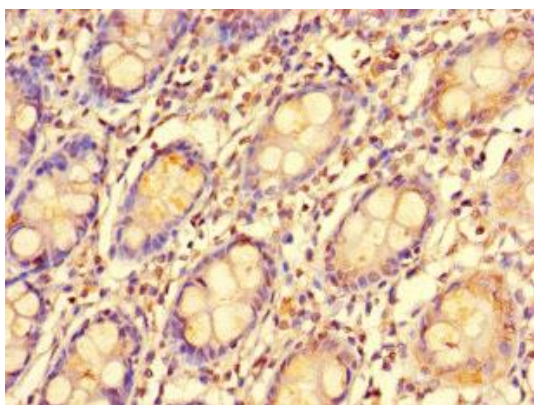
Preservative: 0.03% Proclin 300. Constituents: 50% Glycerol, 0.01M PBS, PH 7.4

## Product Images

---



Immunohistochemistry of paraffin-embedded human thyroid tissue using PACO40354 at dilution of 1:100.



Immunohistochemistry of paraffin-embedded human colon tissue using PACO40354 at dilution of 1:100.