

YIPF4 Antibody



PACO40342

Product Information

Size:

50ug

Reactivity:

Human

Source:

Rabbit

Isotype:

IgG

Applications:

ELISA, WB, IF

Recommended dilutions:

ELISA:1:2000-1:10000, WB:1:1000-1:5000,
IF:1:50-1:200

Protein Background:

Involved in the maintenance of the Golgi structure.

Gene ID:

YIPF4

Uniprot

Q9BSR8

Synonyms:

Protein YIPF4 (YIP1 family member 4), YIPF4

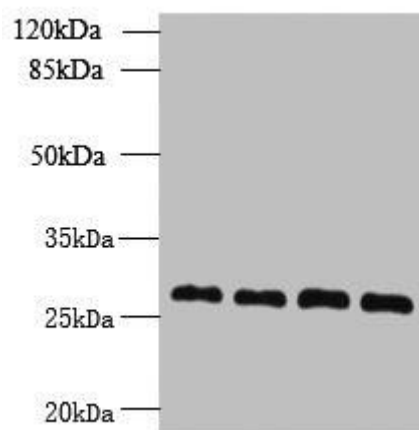
Immunogen:

Recombinant Human Protein YIPF4 protein (1-113AA).

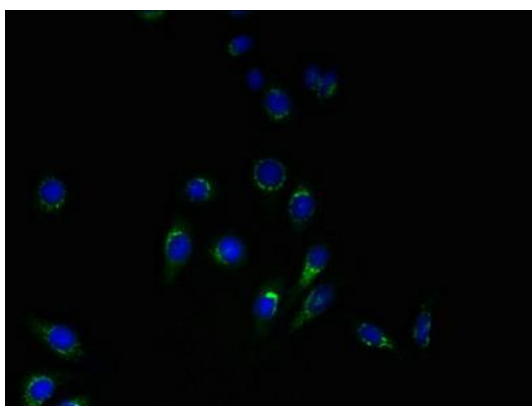
Storage:

Preservative: 0.03% Proclin 300. Constituents: 50% Glycerol, 0.01M PBS, PH 7.4

Product Images



Western blot. All lanes: YIPF4 antibody at 2.5 μ g/ml. Lane 1: Jurkat whole cell lysate. Lane 2: HepG2 whole cell lysate. Lane 3: HeLa whole cell lysate. Lane 4: A431 whole cell lysate. Secondary: Goat polyclonal to rabbit IgG at 1/10000 dilution. Predicted band size: 28 kDa. Observed band size: 28 kDa.



Immunofluorescent analysis of HepG2 cells using PACO40342 at dilution of 1:100 and Alexa Fluor 488-conjugated AffiniPure Goat Anti-Rabbit IgG(H+L).