

# PELO Antibody



PACO40338

---

## Product Information

**Size:**

50ug

**Reactivity:**

Human

**Source:**

Rabbit

**Isotype:**

IgG

**Applications:**

ELISA, IHC

**Recommended dilutions:**

ELISA:1:2000-1:10000, IHC:1:20-1:200

**Protein Background:**

Required for normal chromosome segregation during cell division and genomic stability. May function in recognizing stalled ribosomes and triggering endonucleolytic cleavage of the mRNA, a mechanism to release non-functional ribosomes and degrade damaged mRNAs. May have ribonuclease activity (Potential).

**Gene ID:**

PELO

**Uniprot**

Q9BRX2

**Synonyms:**

Protein pelota homolog (EC 3.1. -. -), PELO

**Immunogen:**

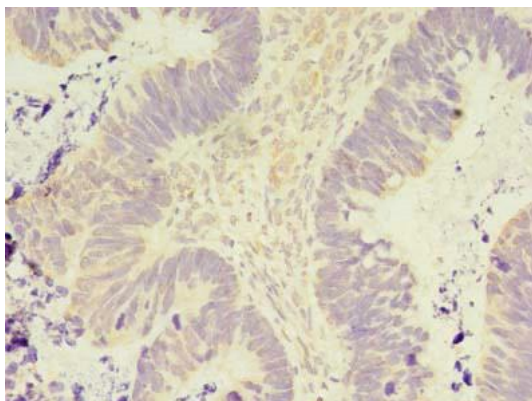
Recombinant Human Protein pelota homolog protein (1-385AA).

**Storage:**

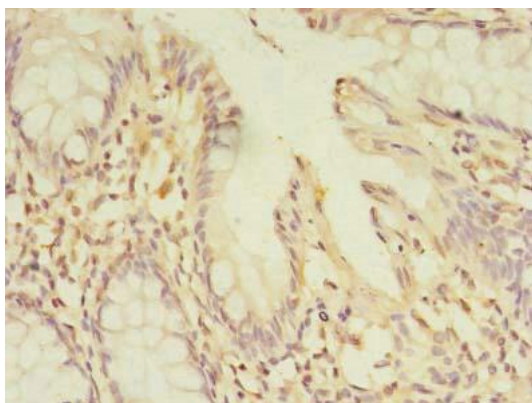
Preservative: 0.03% Proclin 300. Constituents: 50% Glycerol, 0.01M PBS, PH 7.4

## Product Images

---



Immunohistochemistry of paraffin-embedded human ovarian cancer using PACO40338 at dilution of 1:100.



Immunohistochemistry of paraffin-embedded human colon cancer using PACO40338 at dilution of 1:100.