

DDX50 Antibody



PACO40322

Product Information

Size:

50ug

Reactivity:

Human

Source:

Rabbit

Isotype:

IgG

Applications:

ELISA, WB, IHC

Recommended dilutions:

ELISA:1:2000-1:10000, WB:1:500-1:2000,
IHC:1:20-1:200

Protein Background:

membrane, nucleolus, plasma membrane, ATP-dependent RNA helicase activity, poly(A) RNA binding, RNA secondary structure unwinding.

Gene ID:

DDX50

Uniprot

Q9BQ39

Synonyms:

ATP-dependent RNA helicase DDX50 (EC 3.6.4.13) (DEAD box protein 50) (Gu-beta) (Nucleolar protein Gu2), DDX50

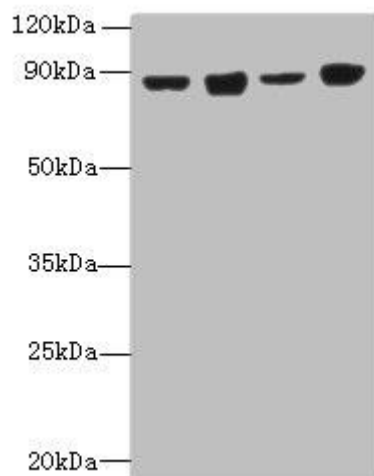
Immunogen:

Recombinant Human ATP-dependent RNA helicase DDX50 protein (1-210AA).

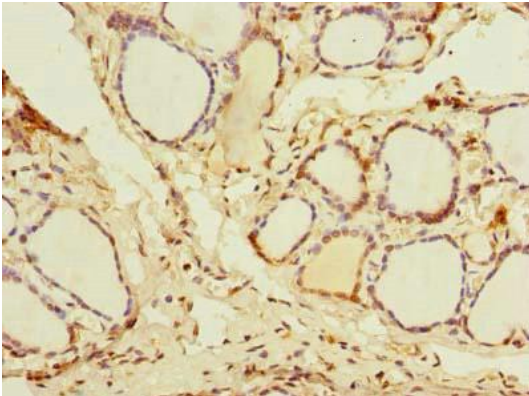
Storage:

Preservative: 0.03% Proclin 300. Constituents: 50% Glycerol, 0.01M PBS, PH 7.4

Product Images



Western blot. All lanes: DDX50 antibody at 4 μ g/ml. Lane 1: HeLa whole cell lysate. Lane 2: Jurkat whole cell lysate. Lane 3: K562 whole cell lysate. Lane 4: 293T whole cell lysate. Secondary: Goat polyclonal to rabbit IgG at 1/10000 dilution. Predicted band size: 83 kDa. Observed band size: 83 kDa.



Immunohistochemistry of paraffin-embedded human thyroid tissue using PACO40322 at dilution of 1:100.