

P2RY13 Antibody



PACO40306

Product Information

Size:

50ug

Reactivity:

Human

Source:

Rabbit

Isotype:

IgG

Applications:

ELISA, WB, IF

Recommended dilutions:

ELISA:1:2000-1:10000, WB:1:1000-1:5000,
IF:1:50-1:200

Protein Background:

Receptor for ADP. Coupled to G(i)-proteins. May play a role in hematopoiesis and the immune system.

Gene ID:

P2RY13

Uniprot

Q9BPV8

Synonyms:

P2Y purinoceptor 13 (P2Y13) (G-protein coupled receptor 86) (G-protein coupled receptor 94), P2RY13, GPR86 GPR94

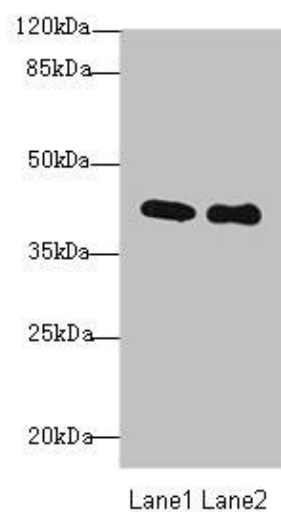
Immunogen:

Recombinant Human P2Y purinoceptor 13 protein (162-190AA).

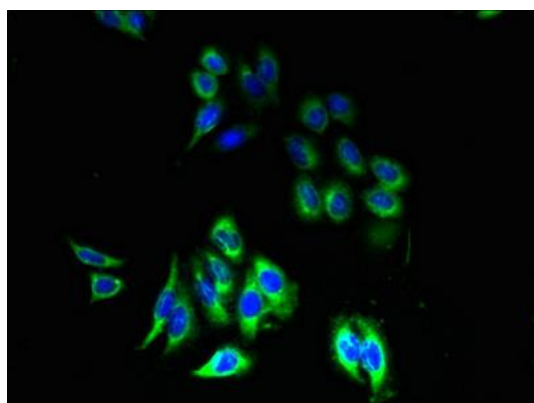
Storage:

Preservative: 0.03% Proclin 300. Constituents: 50% Glycerol, 0.01M PBS, PH 7.4

Product Images



Western blot. All lanes: P2RY13 antibody at 3 μ g/ml. Lane 1: HT29 whole cell lysate. Lane 2: Colo320 whole cell lysate. Secondary. Goat polyclonal to rabbit IgG at 1/10000 dilution. Predicted band size: 41, 39 kDa. Observed band size: 41 kDa.



Immunofluorescent analysis of HepG2 cells using PACO40306 at dilution of 1:100 and Alexa Fluor 488-conjugated AffiniPure Goat Anti-Rabbit IgG(H+L).