

# CYBC1 Antibody



PACO40274

---

## Product Information

**Size:**

50ug

**Reactivity:**

Human, Mouse

**Source:**

Rabbit

**Isotype:**

IgG

**Applications:**

ELISA, WB, IHC, IF

**Recommended dilutions:**

ELISA:1:2000-1:10000, WB:1:500-1:2000,  
IHC:1:20-1:200, IF:1:50-1:200

**Protein Background:****Gene ID:**

CYBC1

**Uniprot**

Q9BQA9

**Synonyms:**

Cytochrome b-245 chaperone 1, Essential for reactive oxygen species protein, Eros, CYBC1, C17orf62, EROS

**Immunogen:**

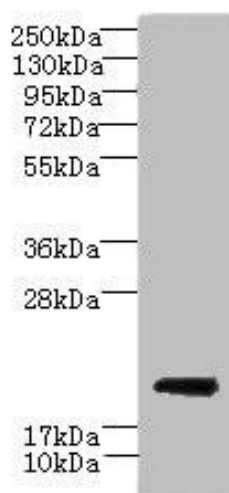
Recombinant Human Cytochrome b-245 chaperone 1 protein (43-187AA).

**Storage:**

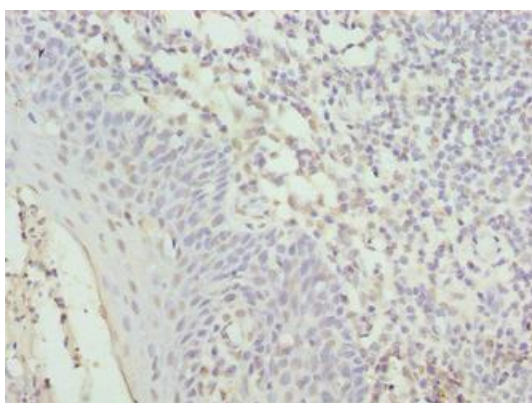
Preservative: 0.03% Proclin 300. Constituents: 50% Glycerol, 0.01M PBS, PH 7.4

## Product Images

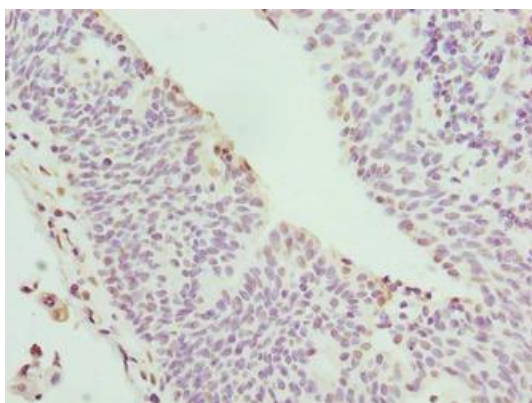
---



Western blot. All lanes: CYBC1 antibody at 1.5 $\mu$ g/ml + Mouse liver tissue. Secondary. Goat polyclonal to rabbit IgG at 1/10000 dilution. Predicted band size: 21, 20 kDa. Observed band size: 21 kDa.



Immunohistochemistry of paraffin-embedded human tonsil tissue using PACO40274 at dilution of 1:100.



Immunohistochemistry of paraffin-embedded human bladder cancer using PACO40274 at dilution of 1:100.