

# SMIM14 Antibody



PACO40198

---

## Product Information

**Size:**

50ug

**Reactivity:**

Human

**Source:**

Rabbit

**Isotype:**

IgG

**Applications:**

ELISA, IHC, IF

**Recommended dilutions:**

ELISA:1:2000-1:10000, IHC:1:20-1:200,  
IF:1:50-1:200

**Protein Background:**

endoplasmic reticulum.

**Gene ID:**

SMIM14

**Uniprot**

Q96QK8

**Synonyms:**

Small integral membrane protein 14, SMIM14, C4orf34

**Immunogen:**

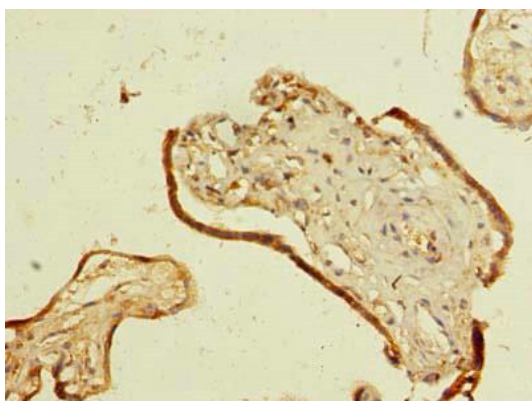
Recombinant Human Small integral membrane protein 14 protein (1-49AA).

**Storage:**

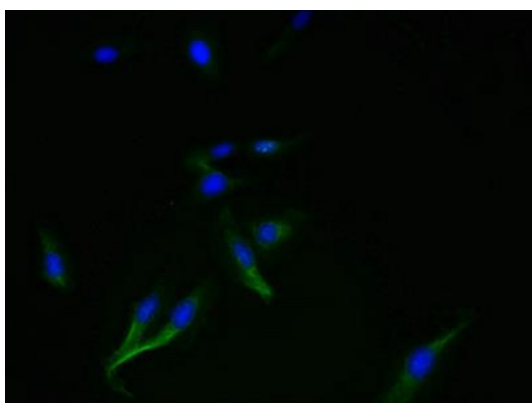
Preservative: 0.03% Proclin 300. Constituents: 50% Glycerol, 0.01M PBS, PH 7.4

## Product Images

---



Immunohistochemistry of paraffin-embedded human placenta tissue using PACO40198 at dilution of 1:100.



Immunofluorescent analysis of HeLa cells using PACO40198 at dilution of 1:100 and Alexa Fluor 488-conjugated AffiniPure Goat Anti-Rabbit IgG(H+L).