

# LRRC3B Antibody



PACO40194

---

## Product Information

**Size:**

50ug

**Reactivity:**

Human

**Source:**

Rabbit

**Isotype:**

IgG

**Applications:**

ELISA, IHC, IF

**Recommended dilutions:**

ELISA:1:2000-1:10000, IHC:1:20-1:200,  
IF:1:50-1:200

**Protein Background:**

**Gene ID:**

LRRC3B

**Uniprot**

Q96PB8

**Synonyms:**

Leucine-rich repeat-containing protein 3B (Leucine-rich repeat protein LRP15), LRRC3B, LRP15

**Immunogen:**

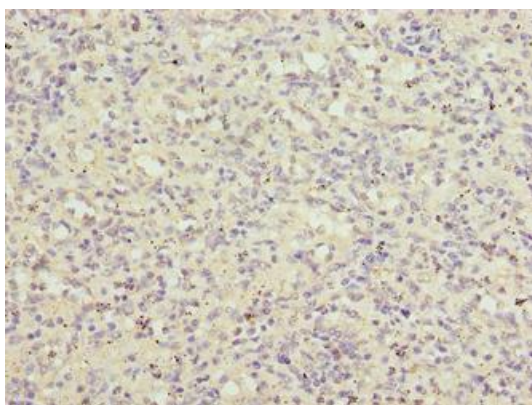
Recombinant Human Leucine-rich repeat-containing protein 3B protein (34-204AA).

**Storage:**

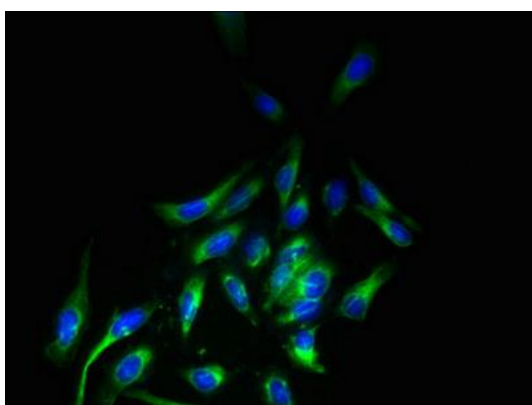
Preservative: 0.03% Proclin 300. Constituents: 50% Glycerol, 0.01M PBS, PH 7.4

## Product Images

---



Immunohistochemistry of paraffin-embedded human spleen tissue using PACO40194 at dilution of 1:100.



Immunofluorescent analysis of HeLa cells using PACO40194 at dilution of 1:100 and Alexa Fluor 488-conjugated AffiniPure Goat Anti-Rabbit IgG(H+L).