

# NOL4L Antibody



PACO40186

---

## Product Information

**Size:**

50ug

**Reactivity:**

Human

**Source:**

Rabbit

**Isotype:**

IgG

**Applications:**

ELISA, WB, IHC, IF

**Recommended dilutions:**

ELISA:1:2000-1:10000, WB:1:500-1:5000,  
IHC:1:20-1:200, IF:1:50-1:200

**Protein Background:**

cytoplasm, nucleoplasm.

**Gene ID:**

NOL4L

**Uniprot**

Q96MY1

**Synonyms:**

Nucleolar protein 4-like, NOL4L, C20orf112 C20orf113

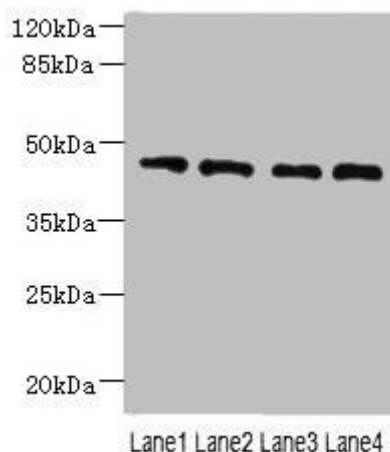
**Immunogen:**

Recombinant Human Nucleolar protein 4-like protein (101-300AA).

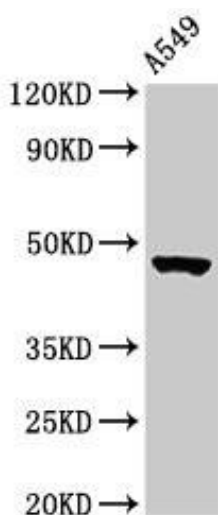
**Storage:**

Preservative: 0.03% Proclin 300. Constituents: 50% Glycerol, 0.01M PBS, PH 7.4

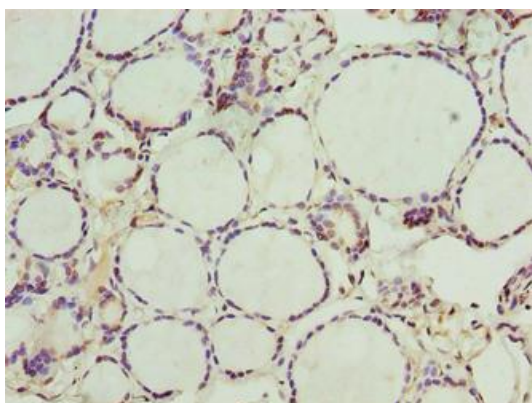
## Product Images



Western blot. All lanes: NOL4L antibody at 0.3 $\mu$ g/ml. Lane 1: PC-3 whole cell lysate. Lane 2: A549 whole cell lysate. Lane 3: HepG2 whole cell lysate. Lane 4: K562 whole cell lysate. Secondary. Goat polyclonal to rabbit IgG at 1/10000 dilution. Predicted band size: 48, 44 kDa. Observed band size: 48 kDa.



Western Blot. Positive WB detected in: A549 whole cell lysate. All lanes: NOL4L antibody at 3 $\mu$ g/ml. Secondary. Goat polyclonal to rabbit IgG at 1/50000 dilution. Predicted band size: 48, 44 kDa. Observed band size: 48 kDa.



Immunohistochemistry of paraffin-embedded human thyroid tissue using PACO40186 at dilution of 1:100.