

# MRPL38 Antibody



PACO40102

---

## Product Information

**Size:**

50ug

**Reactivity:**

Human

**Source:**

Rabbit

**Isotype:**

IgG

**Applications:**

ELISA, IHC

**Recommended dilutions:**

ELISA:1:2000-1:10000, IHC:1:20-1:200

**Protein Background:**

mitochondrial inner membrane, mitochondrial translation, mitochondrial translational elongation, mitochondrial translational initiation, mitochondrial translational termination, organelle organization.

**Gene ID:**

MRPL38

**Uniprot**

Q96DV4

**Synonyms:**

39S ribosomal protein L38, mitochondrial (L38mt) (MRP-L38) (Mitochondrial large ribosomal subunit protein mL38), MRPL38

**Immunogen:**

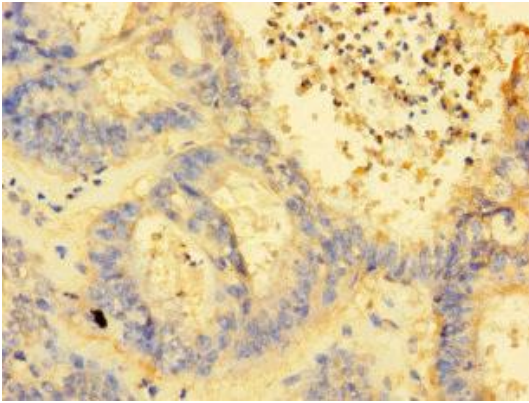
Recombinant Human 39S ribosomal protein L38, mitochondrial protein (35-380AA).

**Storage:**

Preservative: 0.03% Proclin 300. Constituents: 50% Glycerol, 0.01M PBS, PH 7.4

## Product Images

---



Immunohistochemistry of paraffin-embedded human endometrial cancer using PACO40102 at dilution of 1:100.