

MS4A6E Antibody



PACO40098

Product Information

Size:

50ug

Reactivity:

Human

Source:

Rabbit

Isotype:

IgG

Applications:

ELISA, IHC

Recommended dilutions:

ELISA:1:2000-1:10000, IHC:1:20-1:200

Protein Background:

May be involved in signal transduction as a component of a multimeric receptor complex.

Gene ID:

MS4A6E

Uniprot

Q96DS6

Synonyms:

Membrane-spanning 4-domains subfamily A member 6E, MS4A6E

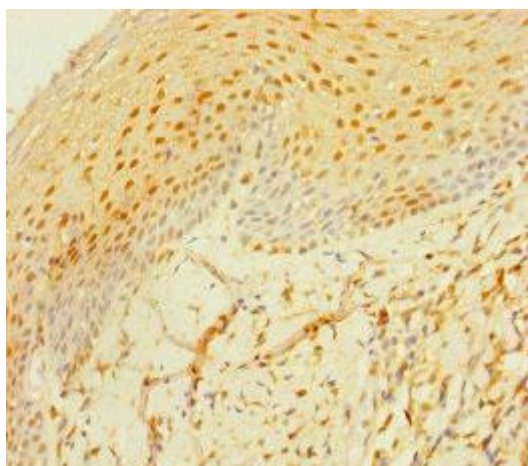
Immunogen:

Recombinant Human Membrane-spanning 4-domains subfamily A member 6E protein (1-52AA).

Storage:

Preservative: 0.03% Proclin 300. Constituents: 50% Glycerol, 0.01M PBS, PH 7.4

Product Images



Immunohistochemistry of paraffin-embedded human tonsil tissue using PACO40098 at dilution of 1:100.