

ASB11 Antibody



PACO40026

Product Information

Size:

50ug

Reactivity:

Human

Source:

Rabbit

Isotype:

IgG

Applications:

ELISA, IHC

Recommended dilutions:

ELISA:1:2000-1:10000, IHC:1:20-1:200

Protein Background:

May be a substrate-recognition component of a SCF-like ECS (Elongin-Cullin-SOCS-box protein) E3 ubiquitin-protein ligase complex which mediates the ubiquitination and subsequent proteasomal degradation of target proteins.

Gene ID:

ASB11

Uniprot

Q8WXH4

Synonyms:

Ankyrin repeat and SOCS box protein 11 (ASB-11), ASB11

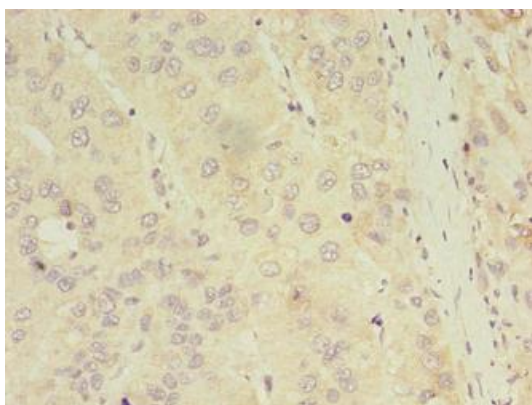
Immunogen:

Recombinant Human Ankyrin repeat and SOCS box protein 11 protein (41-315AA).

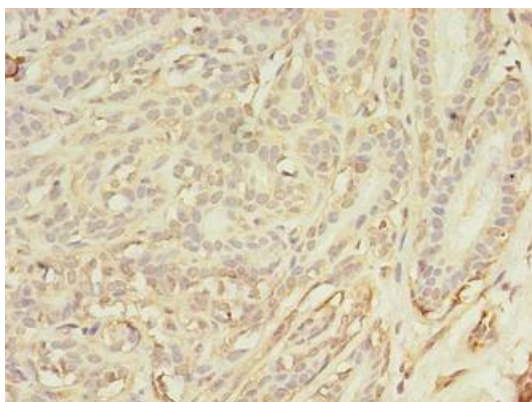
Storage:

Preservative: 0.03% Proclin 300. Constituents: 50% Glycerol, 0.01M PBS, PH 7.4

Product Images



Immunohistochemistry of paraffin-embedded human liver cancer using PACO40026 at dilution of 1:100.



Immunohistochemistry of paraffin-embedded human breast cancer using PACO40026 at dilution of 1:100.