

SCAMP5 Antibody



PACO39966

Product Information

Size:

50ug

Reactivity:

Human

Source:

Rabbit

Isotype:

IgG

Applications:

ELISA, IHC, IF

Recommended dilutions:

ELISA:1:2000-1:10000, IHC:1:20-1:200,
IF:1:50-1:200

Protein Background:

Required for the calcium-dependent exocytosis of signal sequence-containing cytokines such as CCL5. Probably acts in cooperation with the SNARE machinery. May play a role in accumulation of expanded polyglutamine (polyQ) protein huntingtin (HTT) in case of endoplasmic reticulum stress by inhibiting the endocytosis pathway.

Gene ID:

SCAMP5

Uniprot

Q8TAC9

Synonyms:

Secretory carrier-associated membrane protein 5 (Secretory carrier membrane protein 5) (hSCAMP5), SCAMP5

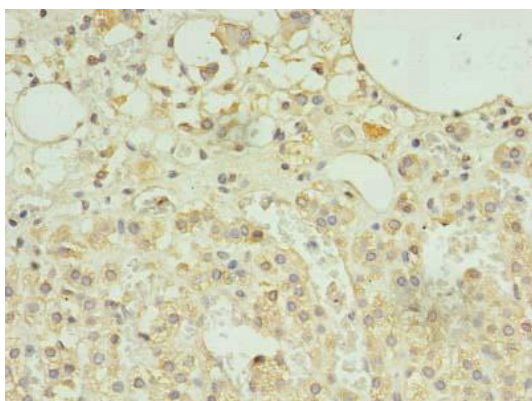
Immunogen:

Recombinant Human Secretory carrier-associated membrane protein 5 protein (170-235AA).

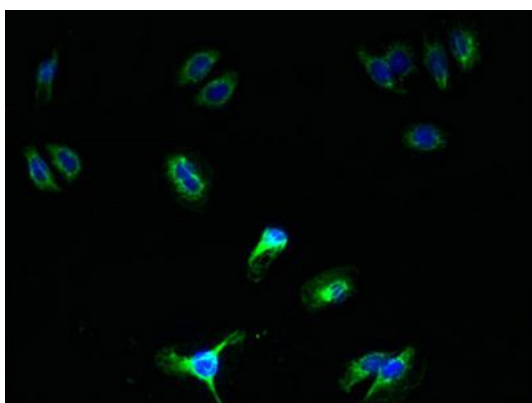
Storage:

Preservative: 0.03% Proclin 300. Constituents: 50% Glycerol, 0.01M PBS, PH 7.4

Product Images



Immunohistochemistry of paraffin-embedded human adrenal gland tissue using PACO39966 at dilution of 1:100.



Immunofluorescent analysis of HepG2 cells using PACO39966 at dilution of 1:100 and Alexa Fluor 488-conjugated AffiniPure Goat Anti-Rabbit IgG(H+L).