

SLC43A3 Antibody



PACO39950

Product Information

Size:

50ug

Reactivity:

Human

Source:

Rabbit

Isotype:

IgG

Applications:

ELISA, IHC, IF

Recommended dilutions:

ELISA:1:2000-1:10000, IHC:1:20-1:200,
IF:1:50-1:200

Protein Background:

Putative transporter.

Gene ID:

SLC43A3

Uniprot

Q8NBI5

Synonyms:

Solute carrier family 43 member 3 (Protein FOAP-13), SLC43A3

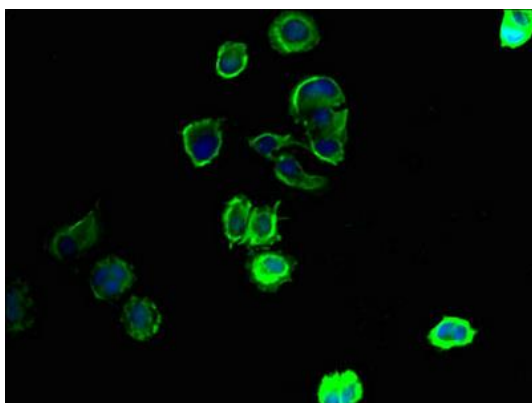
Immunogen:

Recombinant Human Solute carrier family 43 member 3 protein (209-278AA).

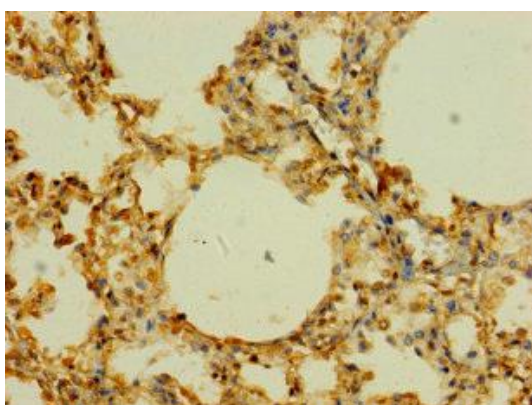
Storage:

Preservative: 0.03% Proclin 300. Constituents: 50% Glycerol, 0.01M PBS, PH 7.4

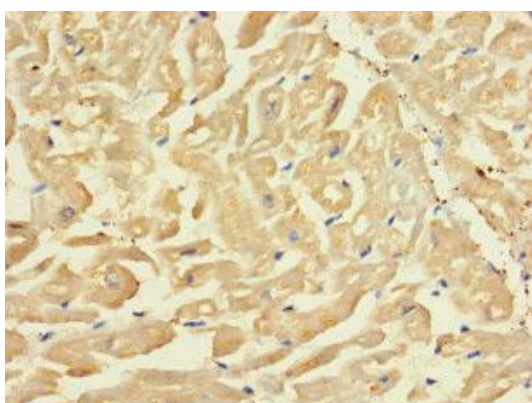
Product Images



Immunofluorescent analysis of MCF-7 cells using PACO39950 at dilution of 1:100 and Alexa Fluor 488-conjugated AffiniPure Goat Anti-Rabbit IgG(H+L).



Immunohistochemistry of paraffin-embedded human lung tissue using PACO39950 at dilution of 1:100.



Immunohistochemistry of paraffin-embedded human heart tissue using PACO39950 at dilution of 1:100.