

# LMNTD1 Antibody



PACO39946

---

## Product Information

**Size:**

50ug

**Reactivity:**

Human, Mouse

**Source:**

Rabbit

**Isotype:**

IgG

**Applications:**

ELISA, WB

**Recommended dilutions:**

ELISA:1:2000-1:10000, WB:1:500-1:2000

**Protein Background:**

**Gene ID:**

LMNTD1

**Uniprot**

Q8N9Z9

**Synonyms:**

Lamin tail domain-containing protein 1 (Intermediate filament tail domain-containing protein 1), LMNTD1, IFLTD1

**Immunogen:**

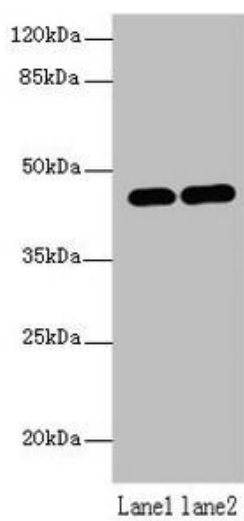
Recombinant Human Lamin tail domain-containing protein 1 protein (113-291AA).

**Storage:**

Preservative: 0.03% Proclin 300. Constituents: 50% Glycerol, 0.01M PBS, PH 7.4

## Product Images

---



Western blot. All lanes: LMNTD1 antibody at 12 $\mu$ g/ml. Lane 1: MCF-7 whole cell lysate. Lane 2: Mouse liver tissue. Secondary: Goat polyclonal to rabbit IgG at 1/10000 dilution. Predicted band size: 44, 34, 37, 42, 46 kDa. Observed band size: 44 kDa.