

PQLC3 Antibody



PACO39938

Product Information

Size:

50ug

Reactivity:

Human, Mouse

Source:

Rabbit

Isotype:

IgG

Applications:

ELISA, WB, IHC, IF

Recommended dilutions:

ELISA:1:2000-1:10000, WB:1:500-1:2000,
IHC:1:20-1:200, IF:1:50-1:200

Protein Background:

endoplasmic reticulum, dolichol-linked oligosaccharide biosynthetic process.

Gene ID:

PQLC3

Uniprot

Q8N755

Synonyms:

PQ-loop repeat-containing protein 3, PQLC3, C2orf22

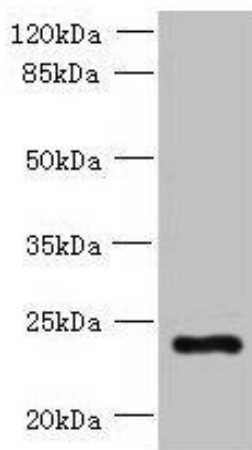
Immunogen:

Recombinant Human PQ-loop repeat-containing protein 3 protein (118-170AA).

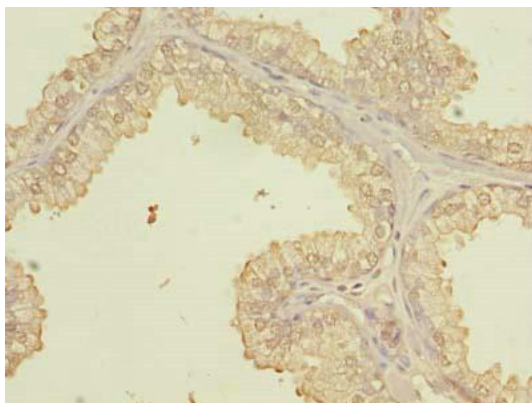
Storage:

Preservative: 0.03% Proclin 300. Constituents: 50% Glycerol, 0.01M PBS, PH 7.4

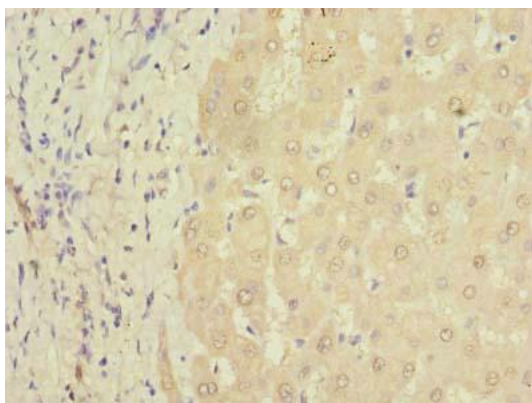
Product Images



Western blot. All lanes: PQLC3 antibody at 3 μ g/ml + Mouse liver tissue. Secondary. Goat polyclonal to rabbit IgG at 1/10000 dilution. Predicted band size: 23, 21 kDa. Observed band size: 23 kDa.



Immunohistochemistry of paraffin-embedded human prostate cancer using PACO39938 at dilution of 1:100.



Immunohistochemistry of paraffin-embedded human liver tissue using PACO39938 at dilution of 1:100.