

# PDIK1L Antibody



PACO39898

---

## Product Information

**Size:**

50ug

**Reactivity:**

Human

**Source:**

Rabbit

**Isotype:**

IgG

**Applications:**

ELISA, IHC

**Recommended dilutions:**

ELISA:1:2000-1:10000, IHC:1:20-1:200

**Protein Background:**

nucleoplasm.

**Gene ID:**

PDIK1L

**Uniprot**

Q8N165

**Synonyms:**

Serine/threonine-protein kinase PDIK1L (EC 2.7.11.1) (PDLIM1-interacting kinase 1-like), PDIK1L, CLIK1L

**Immunogen:**

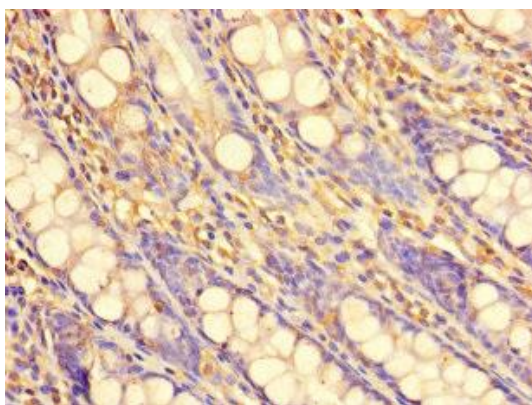
Recombinant Human Serine/threonine-protein kinase PDIK1L protein (1-341AA).

**Storage:**

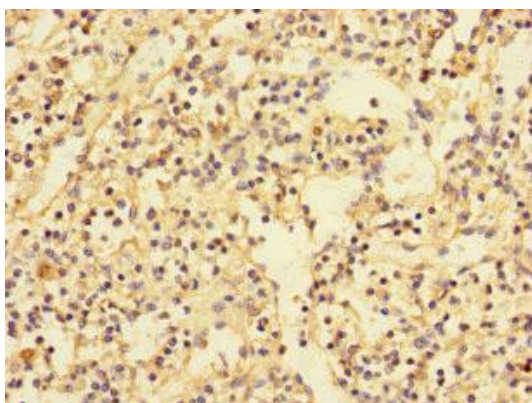
Preservative: 0.03% Proclin 300. Constituents: 50% Glycerol, 0.01M PBS, PH 7.4

## Product Images

---



Immunohistochemistry of paraffin-embedded human colon tissue using PACO39898 at dilution of 1:100.



Immunohistochemistry of paraffin-embedded human spleen tissue using PACO39898 at dilution of 1:100.