

MAGEB18 Antibody



PACO39874

Product Information

Size:

50ug

Reactivity:

Human, Mouse

Source:

Rabbit

Isotype:

IgG

Applications:

ELISA, WB

Recommended dilutions:

ELISA:1:2000-1:10000, WB:1:500-1:2000

Protein Background:

May enhance ubiquitin ligase activity of RING-type zinc finger-containing E3 ubiquitin-protein ligases. Proposed to act through recruitment and/or stabilization of the Ubl-conjugating enzyme (E2) at the E3: substrate complex.

Gene ID:

MAGEB18

Uniprot

Q96M61

Synonyms:

Melanoma-associated antigen B18 (MAGE-B18 antigen), MAGEB18

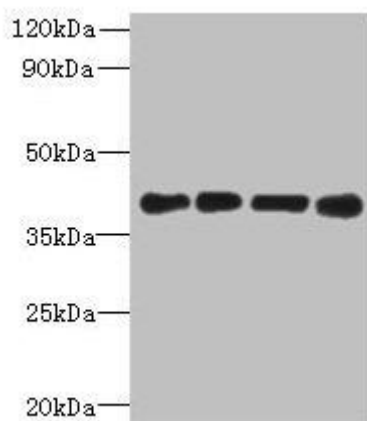
Immunogen:

Recombinant Human Melanoma-associated antigen B18 protein (1-270AA).

Storage:

Preservative: 0.03% Proclin 300. Constituents: 50% Glycerol, 0.01M PBS, PH 7.4

Product Images



Western blot. All lanes: MAGEB18 antibody at 12 μ g/ml. Lane 1: MCF-7 whole cell lysate. Lane 2: A549 whole cell lysate. Lane 3: Hela whole cell lysate. Lane 4: Mouse heart tissue. Secondary. Goat polyclonal to rabbit IgG at 1/10000 dilution. Predicted band size: 39 kDa. Observed band size: 39 kDa.