

C8orf48 Antibody



PACO39862

Product Information

Size:

50ug

Reactivity:

Human, Mouse

Source:

Rabbit

Isotype:

IgG

Applications:

ELISA, WB, IHC

Recommended dilutions:

ELISA:1:2000-1:10000, WB:1:500-1:2000,
IHC:1:20-1:200

Protein Background:

Gene ID:

C8orf48

Uniprot

Q96LL4

Synonyms:

Uncharacterized protein C8orf48, C8orf48

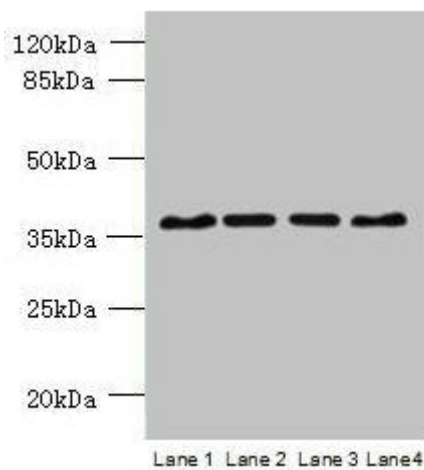
Immunogen:

Recombinant Human Uncharacterized protein C8orf48 protein (1-319AA).

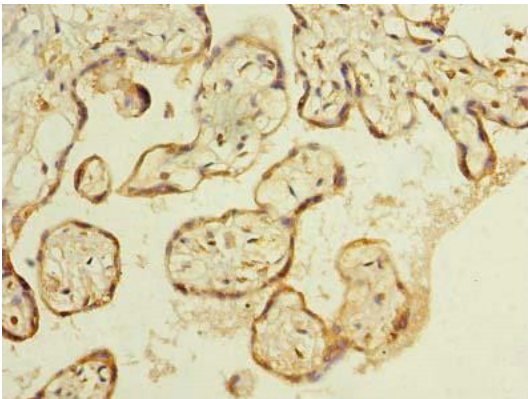
Storage:

Preservative: 0.03% Proclin 300. Constituents: 50% Glycerol, 0.01M PBS, PH 7.4

Product Images



Western blot. All lanes: C8orf48 antibody at 1 μ g/ml. Lane 1: HepG2 whole cell lysate. Lane 2: Mouse liver tissue. Lane 3: MCF-7 whole cell lysate. Lane 4: K562 whole cell lysate. Secondary. Goat polyclonal to rabbit IgG at 1/10000 dilution. Predicted band size: 37 kDa. Observed band size: 37 kDa.



Immunohistochemistry of paraffin-embedded human placenta tissue using PACO39862 at dilution of 1:100.