

# LTV1 Antibody



PACO39838

---

## Product Information

**Size:**

50ug

**Reactivity:**

Human

**Source:**

Rabbit

**Isotype:**

IgG

**Applications:**

ELISA, IHC

**Recommended dilutions:**

ELISA:1:2000-1:10000, IHC:1:20-1:200

**Protein Background:**

cytoplasm, nucleoplasm.

**Gene ID:**

LTV1

**Uniprot**

Q96GA3

**Synonyms:**

Protein LTV1 homolog, LTV1, C6orf93

**Immunogen:**

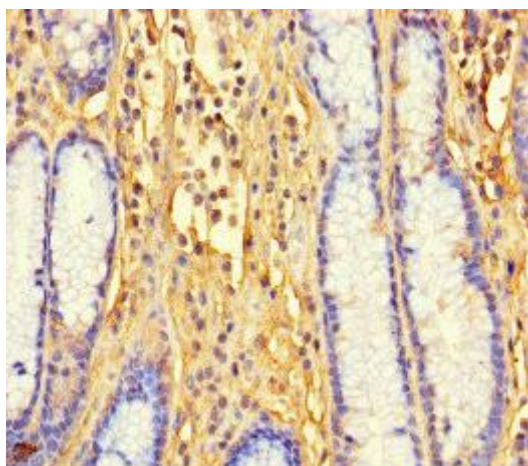
Recombinant Human Protein LTV1 homolog protein (201-475AA).

**Storage:**

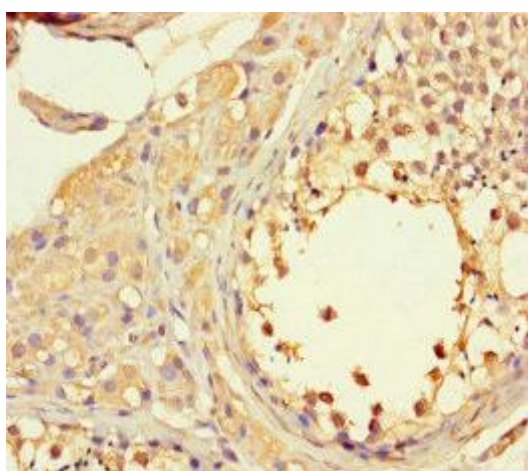
Preservative: 0.03% Proclin 300. Constituents: 50% Glycerol, 0.01M PBS, PH 7.4

## Product Images

---



Immunohistochemistry of paraffin-embedded human gastric cancer using PACO39838 at dilution of 1:100.



Immunohistochemistry of paraffin-embedded human testis tissue using PACO39838 at dilution of 1:100.