

PACO39830

Product Information

Size:

50ug

Reactivity:

Human

Source:

Rabbit

Isotype:

IgG

Applications:

ELISA, WB, IHC

Recommended dilutions:

ELISA:1:2000-1:10000, WB:1:500-1:2000,
IHC:1:20-1:200

Protein Background:

Catalyzes the trimethylation of eukaryotic elongation factor 2 (EEF2) on 'Lys-525'.

Gene ID:

EEF2KMT

Uniprot

Q96G04

Synonyms:

Protein-lysine N-methyltransferase EEF2KMT (EC 2.1.1. -) (eEF2-lysine methyltransferase) (eEF2-KMT), EEF2KMT, FAM86A

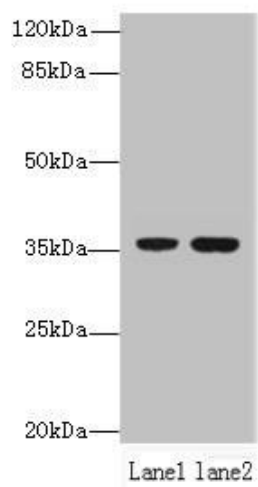
Immunogen:

Recombinant Human Protein-lysine N-methyltransferase EEF2KMT protein (1-330AA).

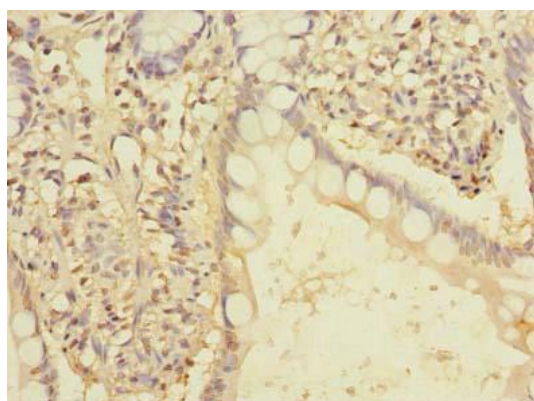
Storage:

Preservative: 0.03% Proclin 300. Constituents: 50% Glycerol, 0.01M PBS, PH 7.4

Product Images



Western blot. All lanes: EEF2KMT antibody at 6 μ g/ml. Lane 1: Hela whole cell lysate. Lane 2: 293T whole cell lysate. Secondary: Goat polyclonal to rabbit IgG at 1/10000 dilution. Predicted band size: 37, 34 kDa. Observed band size: 37 kDa.



Immunohistochemistry of paraffin-embedded human small intestine tissue using PACO39830 at dilution of 1:100.