

# UBLCP1 Antibody



PACO39758

---

## Product Information

**Size:**

50ug

**Reactivity:**

Human

**Source:**

Rabbit

**Isotype:**

IgG

**Applications:**

ELISA, WB, IHC

**Recommended dilutions:**

ELISA:1:2000-1:10000, WB:1:500-1:2000,  
IHC:1:20-1:200

**Protein Background:**

Dephosphorylates 26S nuclear proteasomes, thereby decreasing their proteolytic activity. The dephosphorylation may prevent assembly of the core and regulatory particles (CP and RP) into mature 26S proteasome.

**Gene ID:**

UBLCP1

**Uniprot**

Q8WVY7

**Synonyms:**

Ubiquitin-like domain-containing CTD phosphatase 1 (EC 3.1.3.16) (Nuclear proteasome inhibitor UBLCP1), UBLCP1

**Immunogen:**

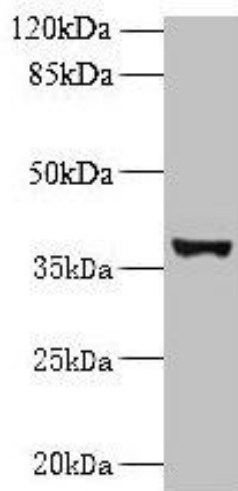
Recombinant Human Ubiquitin-like domain-containing CTD phosphatase 1 protein (2-318AA).

**Storage:**

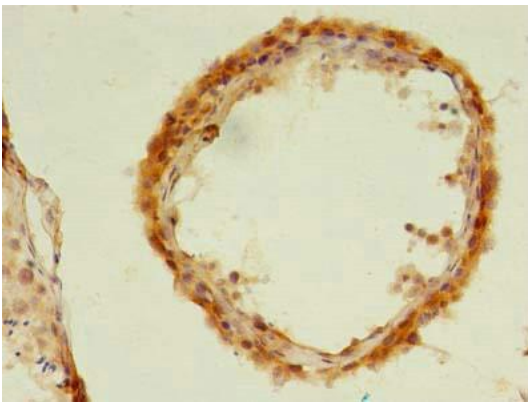
Preservative: 0.03% Proclin 300. Constituents: 50% Glycerol, 0.01M PBS, PH 7.4

## Product Images

---



Western blot. All lanes: UBLC1 antibody at 0.2 $\mu$ g/ml + U251 whole cell lysate. Secondary. Goat polyclonal to rabbit IgG at 1/10000 dilution. Predicted band size: 37 kDa. Observed band size: 37 kDa.



Immunohistochemistry of paraffin-embedded human testis tissue using PACO39758 at dilution of 1:100.