

# STXBP6 Antibody



PACO39706

---

## Product Information

**Size:**

50ug

**Reactivity:**

Human, Mouse

**Source:**

Rabbit

**Isotype:**

IgG

**Applications:**

ELISA, WB, IHC, IF

**Recommended dilutions:**

ELISA:1:2000-1:10000, WB:1:500-1:2000,  
IHC:1:20-1:200, IF:1:50-1:200

**Protein Background:**

Forms non-fusogenic complexes with SNAP25 and STX1A and may thereby modulate the formation of functional SNARE complexes and exocytosis.

**Gene ID:**

STXBP6

**Uniprot**

Q8NFX7

**Synonyms:**

Syntaxin-binding protein 6 (Amisyn), STXBP6

**Immunogen:**

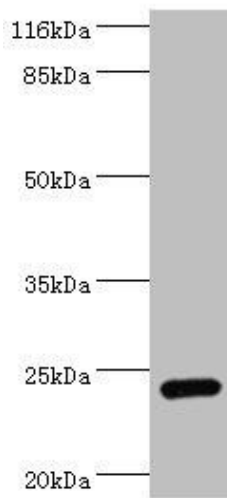
Recombinant Human Syntaxin-binding protein 6 protein (2-210AA).

**Storage:**

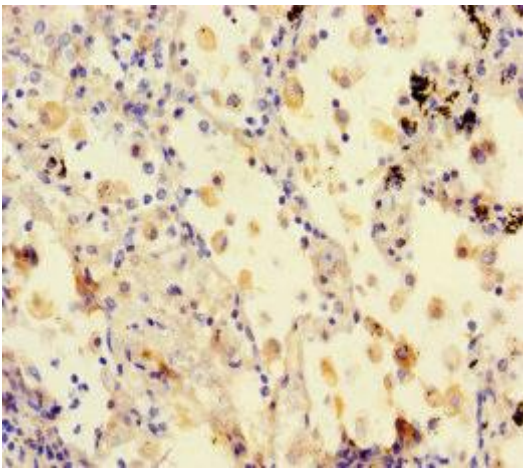
Preservative: 0.03% Proclin 300. Constituents: 50% Glycerol, 0.01M PBS, PH 7.4

## Product Images

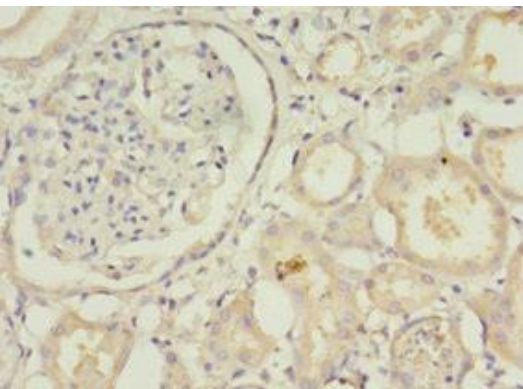
---



Western blot. All lanes: STXBP6 antibody at 2 $\mu$ g/ml + Mouse brain tissue. Secondary. Goat polyclonal to rabbit IgG at 1/10000 dilution. Predicted band size: 24, 12 kDa. Observed band size: 24 kDa.



Immunohistochemistry of paraffin-embedded human lung cancer using PACO39706 at dilution of 1:100.



Immunohistochemistry of paraffin-embedded human kidney tissue using PACO39706 at dilution of 1:100.