

BEND7 Antibody



PACO39662

Product Information

Size:

50ug

Reactivity:

Human

Source:

Rabbit

Isotype:

IgG

Applications:

ELISA, IHC

Recommended dilutions:

ELISA:1:2000-1:10000, IHC:1:20-1:200

Protein Background:

extracellular exosome.

Gene ID:

BEND7

Uniprot

Q8N7W2

Synonyms:

BEN domain-containing protein 7, BEND7, C10orf30

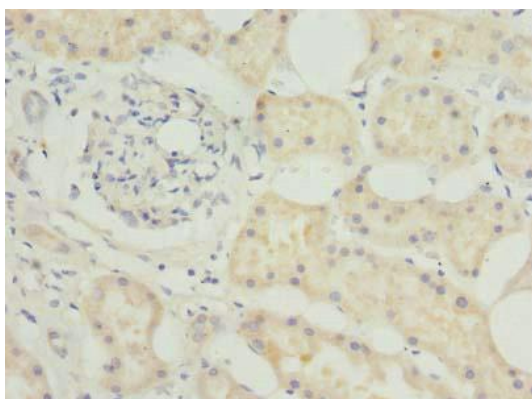
Immunogen:

Recombinant Human BEN domain-containing protein 7 protein (1-374AA).

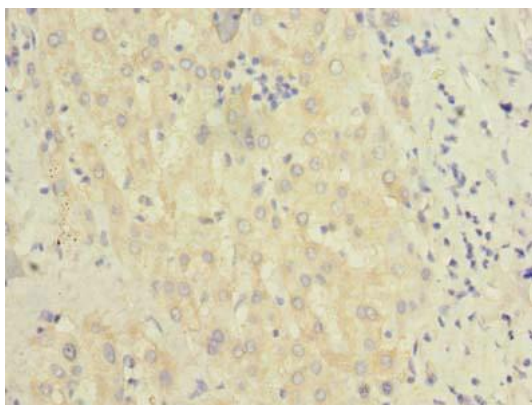
Storage:

Preservative: 0.03% Proclin 300. Constituents: 50% Glycerol, 0.01M PBS, PH 7.4

Product Images



Immunohistochemistry of paraffin-embedded human kidney tissue using PACO39662 at dilution of 1:100.



Immunohistochemistry of paraffin-embedded human liver tissue using PACO39662 at dilution of 1:100.