

PACO39630

Product Information

Size:

50ug

Reactivity:

Human, Mouse

Source:

Rabbit

Isotype:

IgG

Applications:

ELISA, WB, IHC

Recommended dilutions:

ELISA:1:2000-1:10000, WB:1:1000-1:5000,
IHC:1:20-1:200

Protein Background:

Mitochondrial malate and beta-methylmalate synthase, which may be involved in vitamin B12 metabolism (Probable). Acts both as a malate synthase, converting glyoxylate and acetyl-CoA to malate. Also acts as a beta-methylmalate synthase by mediating conversion of glyoxylate and propionyl-CoA to beta-methylmalate.

Gene ID:

CLYBL

Uniprot

Q8N0X4

Synonyms:

Citramalyl-CoA lyase, mitochondrial (EC 4.1.3.25) (Beta-methylmalate synthase) (EC 2.3.3. -) (Citrate lyase subunit beta-like protein) (Citrate lyase beta-like) (Malate synthase) (EC 2.3.3.9), CLYBL, CLB

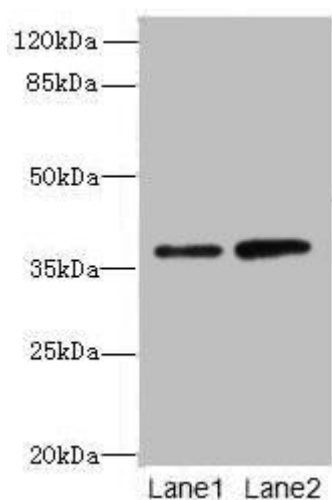
Immunogen:

Recombinant Human Citrate lyase subunit beta-like protein, mitochondrial protein (23-340AA).

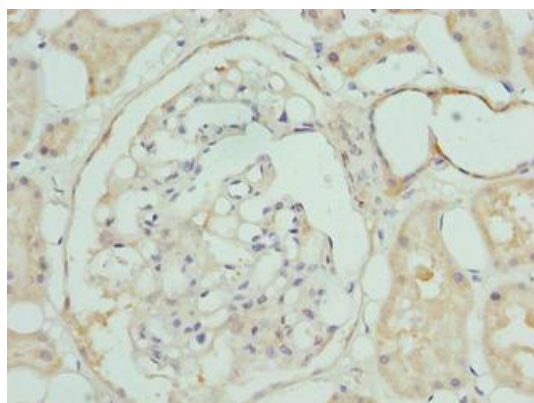
Storage:

Preservative: 0.03% Proclin 300. Constituents: 50% Glycerol, 0.01M PBS, PH 7.4

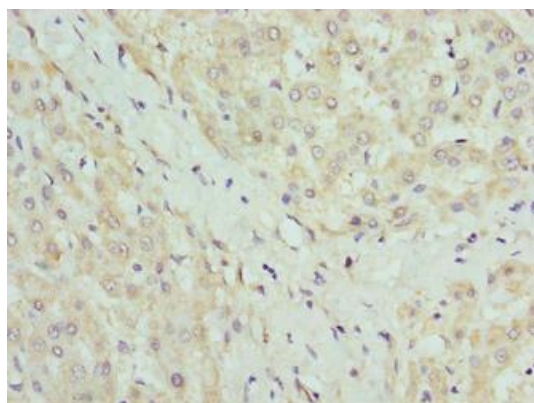
Product Images



Western blot. All lanes: CLYBL antibody at 1 μ g/ml. Lane 1: Hela whole cell lysate. Lane 2: NIH/3T3 whole cell lysate. Secondary. Goat polyclonal to rabbit IgG at 1/10000 dilution. Predicted band size: 38, 34 kDa. Observed band size: 38 kDa.



Immunohistochemistry of paraffin-embedded human kidney tissue using PACO39630 at dilution of 1:100.



Immunohistochemistry of paraffin-embedded human liver tissue using PACO39630 at dilution of 1:100.