

RPL10L Antibody



PACO39606

Product Information

Size:

50ug

Reactivity:

Human, Mouse

Source:

Rabbit

Isotype:

IgG

Applications:

ELISA, WB, IHC

Recommended dilutions:

ELISA:1:2000-1:10000, WB:1:500-1:2000,
IHC:1:20-1:200

Protein Background:

May play a role in compensating for the inactivated X-linked gene during spermatogenesis.

Gene ID:

RPL10L

Uniprot

Q96L21

Synonyms:

60S ribosomal protein L10-like (Large ribosomal subunit protein uL16-like), RPL10L

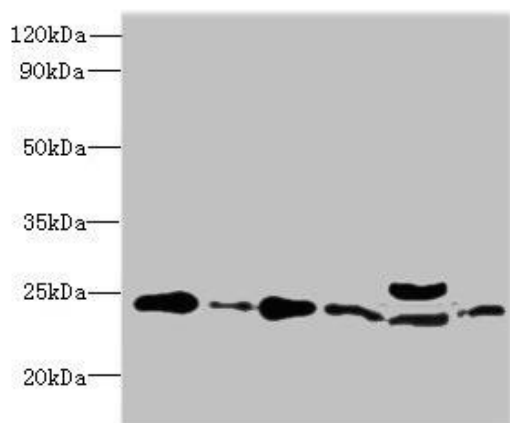
Immunogen:

Recombinant Human 60S ribosomal protein L10-like protein (1-214AA).

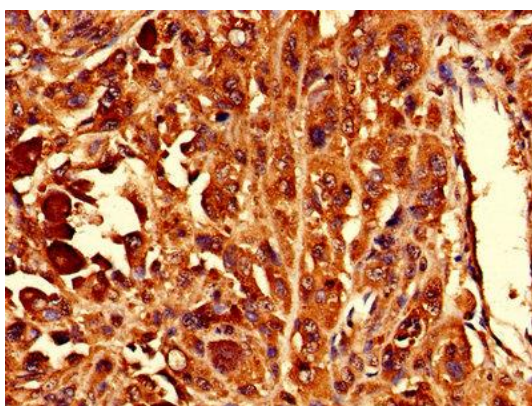
Storage:

Preservative: 0.03% Proclin 300. Constituents: 50% Glycerol, 0.01M PBS, PH 7.4

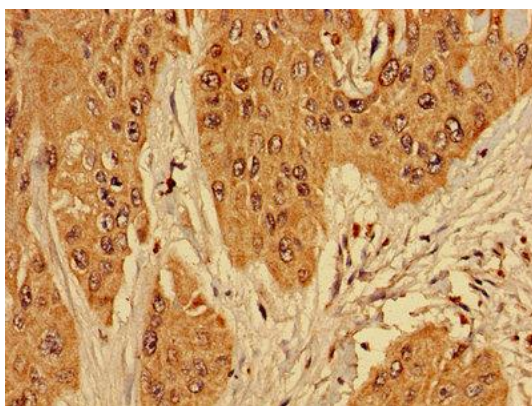
Product Images



Western blot. All lanes: RPL10L antibody at 4 μ g/ml. Lane 1: Jurkat whole cell lysate. Lane 2: Hela whole cell lysate. Lane 3: HL60 whole cell lysate. Lane 4: K562 whole cell lysate. Lane 5: Mouse liver tissue. Lane 6: MCF-7 whole cell lysate. Secondary. Goat polyclonal to rabbit IgG at 1/10000 dilution. Predicted band size: 25 kDa. Observed band size: 25 kDa.



Immunohistochemistry of paraffin-embedded human melanoma using PACO39606 at dilution of 1:100.



Immunohistochemistry of paraffin-embedded human cervical cancer using PACO39606 at dilution of 1:100.