

# RMDN1 Antibody



PACO39570

---

## Product Information

**Size:**

50ug

**Reactivity:**

Human

**Source:**

Rabbit

**Isotype:**

IgG

**Applications:**

ELISA, WB, IHC

**Recommended dilutions:**

ELISA:1:2000-1:10000, WB:1:1000-1:5000,  
IHC:1:20-1:200

**Protein Background:**

**Gene ID:**

RMDN1

**Uniprot**

Q96DB5

**Synonyms:**

Regulator of microtubule dynamics protein 1 (RMD-1) (hRMD-1) (Protein FAM82B),  
RMDN1, FAM82B

**Immunogen:**

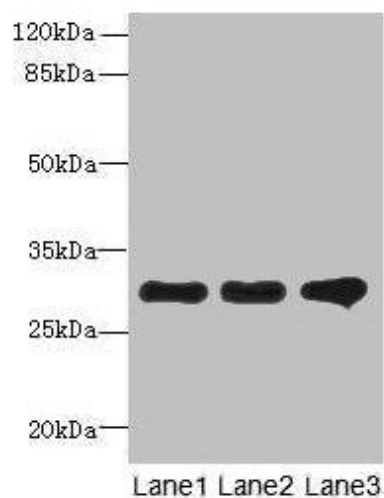
Recombinant Human Regulator of microtubule dynamics protein 1 protein (13-314AA).

**Storage:**

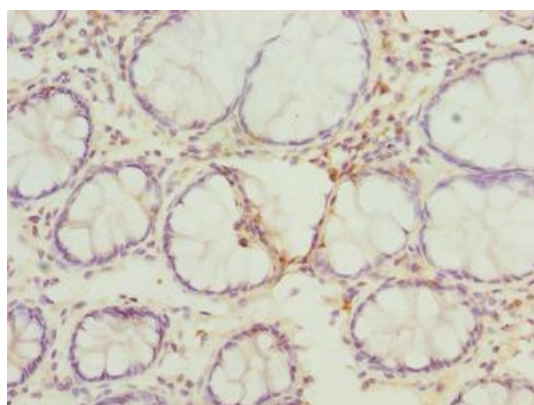
Preservative: 0.03% Proclin 300. Constituents: 50% Glycerol, 0.01M PBS, PH 7.4

## Product Images

---



Western blot. All lanes: RMDN1 antibody at 0.6 $\mu$ g/ml. Lane 1: K562 whole cell lysate. Lane 2: HepG2 whole cell lysate. Lane 3: MCF-7 whole cell lysate. Secondary. Goat polyclonal to rabbit IgG at 1/10000 dilution. Predicted band size: 36, 33, 31 kDa. Observed band size: 31 kDa.



Immunohistochemistry of paraffin-embedded human colon cancer using PACO39570 at dilution of 1:100.



Immunohistochemistry of paraffin-embedded human skeletal muscle tissue using PACO39570 at dilution of 1:100.