

PACO39542

Product Information

Size:

50ug

Reactivity:

Human

Source:

Rabbit

Isotype:

IgG

Applications:

ELISA, WB

Recommended dilutions:

ELISA:1:2000-1:10000, WB:1:1000-1:5000

Protein Background:

Component of the SOSS complex, a multiprotein complex that functions downstream of the MRN complex to promote DNA repair and G2/M checkpoint. In the SOSS complex, acts as a sensor of single-stranded DNA that binds to single-stranded DNA, in particular to polypyrimidines. The SOSS complex associates with DNA lesions and influences diverse endpoints in the cellular DNA damage response including cell-cycle checkpoint activation, recombinational repair and maintenance of genomic stability. Required for efficient homologous recombination-dependent repair of double-strand breaks (DSBs) and ATM-dependent signaling pathways.

Gene ID:

NABP1

Uniprot

Q96AH0

Synonyms:

SOSS complex subunit B2 (Nucleic acid, binding protein 1) (Oligonucleotide/oligosaccharide-binding fold-containing protein 2A) (Sensor of single-strand DNA complex subunit B2) (Sensor of ssDNA subunit B2) (SOSS-B2) (Single-stranded DNA-binding protein 2) (hSSB2), NABP1, OBFC2A SSB2

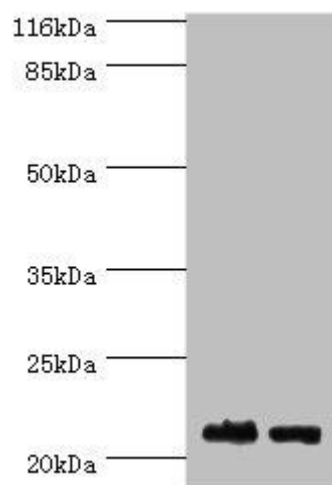
Immunogen:

Recombinant Human SOSS complex subunit B2 protein (1-204AA).

Storage:

Preservative: 0.03% Proclin 300. Constituents: 50% Glycerol, 0.01M PBS, PH 7.4

Product Images



Western blot. All lanes: NABP1 antibody at 2 μ g/ml. Lane 1: HeLa whole cell lysate. Lane 2: Jurkat whole cell lysate. Secondary: Goat polyclonal to rabbit IgG at 1/10000 dilution. Predicted band size: 23, 14, 15 kDa. Observed band size: 23 kDa.