

PACO39538

Product Information

Size:

50ug

Reactivity:

Human, Mouse, Rat

Source:

Rabbit

Isotype:

IgG

Applications:

ELISA, WB, IHC

Recommended dilutions:

ELISA:1:2000-1:10000, WB:1:500-1:2000,
IHC:1:20-1:200

Protein Background:

Binds GDP/GTP and possesses intrinsic GTPase activity. Has higher affinity for GDP than for GTP. In cell lines overexpression leads to a reduction in the rate of proliferation, colony formation and in tumorigenic potential.

Gene ID:

RERG

Uniprot

Q96A58

Synonyms:

Ras-related and estrogen-regulated growth inhibitor, RERG

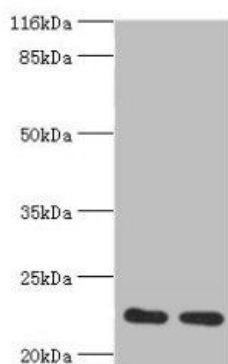
Immunogen:

Recombinant Human Ras-related and estrogen-regulated growth inhibitor protein (1-199AA).

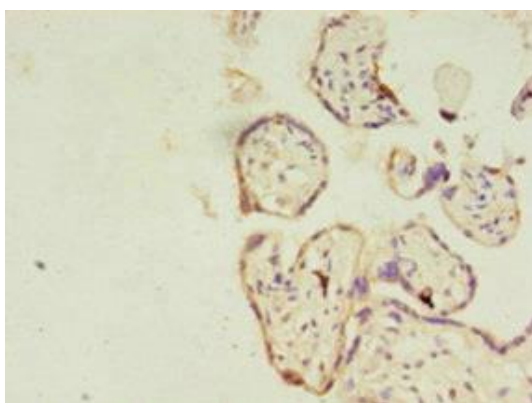
Storage:

Preservative: 0.03% Proclin 300. Constituents: 50% Glycerol, 0.01M PBS, PH 7.4

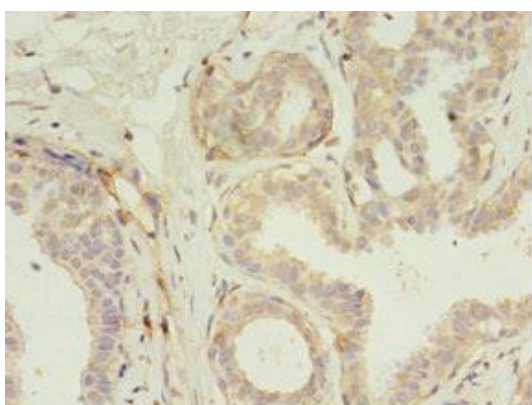
Product Images



Western blot. All lanes: RERG antibody at 2 μ g/ml. Lane 1: Mouse thymus tissue. Lane 2: Rat lung tissue. Secondary. Goat polyclonal to rabbit IgG at 1/10000 dilution. Predicted band size: 23, 21 kDa. Observed band size: 23 kDa.



Immunohistochemistry of paraffin-embedded human placenta tissue using PACO39538 at dilution of 1:100.



Immunohistochemistry of paraffin-embedded human breast cancer using PACO39538 at dilution of 1:100.