

CPNE4 Antibody



PACO39534

Product Information

Size:

50ug

Reactivity:

Human, Mouse, Rat

Source:

Rabbit

Isotype:

IgG

Applications:

ELISA, WB, IHC, IF

Recommended dilutions:

ELISA:1:2000-1:10000, WB:1:500-1:5000,
IHC:1:20-1:200, IF:1:50-1:200

Protein Background:

Probable calcium-dependent phospholipid-binding protein that may play a role in calcium-mediated intracellular processes.

Gene ID:

CPNE4

Uniprot

Q96A23

Synonyms:

Copine-4 (Copine IV) (Copine-8), CPNE4

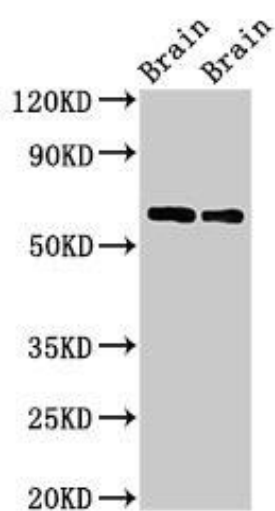
Immunogen:

Recombinant Human Copine-4 protein (1-280AA).

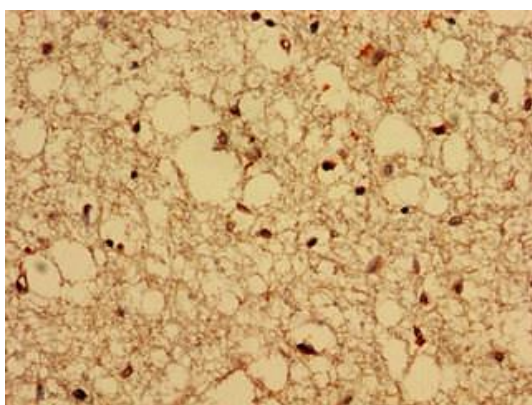
Storage:

Preservative: 0.03% Proclin 300. Constituents: 50% Glycerol, 0.01M PBS, PH 7.4

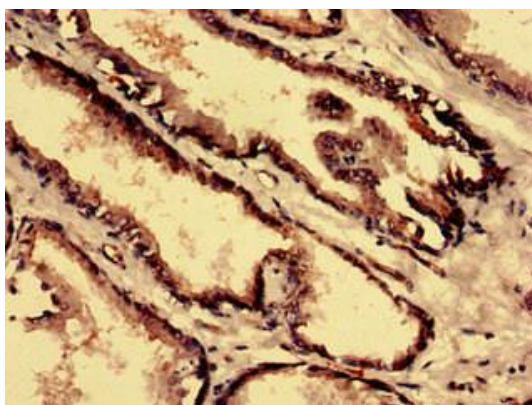
Product Images



Western Blot. Positive WB detected in: Rat brain tissue, Mouse brain tissue. All lanes: CPNE4 antibody at 2 μ g/ml. Secondary. Goat polyclonal to rabbit IgG at 1/50000 dilution. Predicted band size: 63, 65 kDa. Observed band size: 63 kDa.



Immunohistochemistry analysis of human brain tissue using PACO39534 at dilution of 1:100.



Immunohistochemistry analysis of human prostate tissue using PACO39534 at dilution of 1:100.