

FAM156A Antibody



PACO39442

Product Information

Size:

50ug

Reactivity:

Human, Mouse

Source:

Rabbit

Isotype:

IgG

Applications:

ELISA, WB, IHC, IF

Recommended dilutions:

ELISA:1:2000-1:10000, WB:1:500-1:2000,
IHC:1:20-1:200, IF:1:50-1:200

Protein Background:

nuclear envelope.

Gene ID:

FAM156A

Uniprot

Q8NDB6

Synonyms:

Protein FAM156A/FAM156B (Transmembrane protein 29/29B), FAM156A; FAM156B, TMEM29; TMEM29B

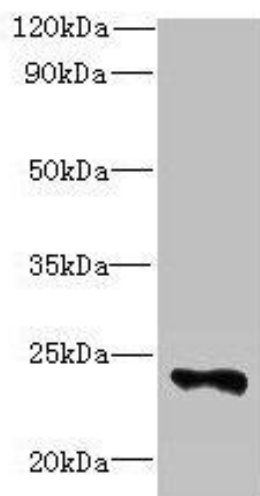
Immunogen:

Recombinant Human Protein FAM156A/FAM156B protein (1-153AA).

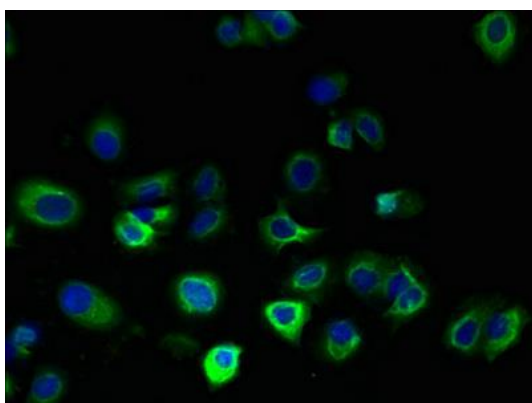
Storage:

Preservative: 0.03% Proclin 300. Constituents: 50% Glycerol, 0.01M PBS, PH 7.4

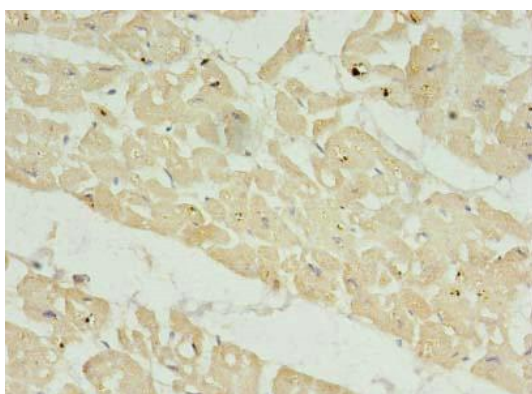
Product Images



Western blot. All lanes: FAM156A antibody at 5 μ g/ml + Mouse heart tissue. Secondary. Goat polyclonal to rabbit IgG at 1/10000 dilution. Predicted band size: 25 kDa. Observed band size: 25 kDa.



Immunofluorescent analysis of MCF-7 cells using PACO39442 at dilution of 1:100 and Alexa Fluor 488-conjugated AffiniPure Goat Anti-Rabbit IgG(H+L).



Immunohistochemistry of paraffin-embedded human heart tissue using PACO39442 at dilution of 1:100.