

PPFIBP2 Antibody



PACO39438

Product Information

Size:

50ug

Reactivity:

Human

Source:

Rabbit

Isotype:

IgG

Applications:

ELISA, WB

Recommended dilutions:

ELISA:1:2000-1:10000, WB:1:500-1:2000

Protein Background:

May regulate the disassembly of focal adhesions. Did not bind receptor-like tyrosine phosphatases type 2A.

Gene ID:

PPFIBP2

Uniprot

Q8ND30

Synonyms:

Liprin-beta-2 (Protein tyrosine phosphatase receptor type f polypeptide-interacting protein-binding protein 2) (PTPRF-interacting protein-binding protein 2), PPFIBP2

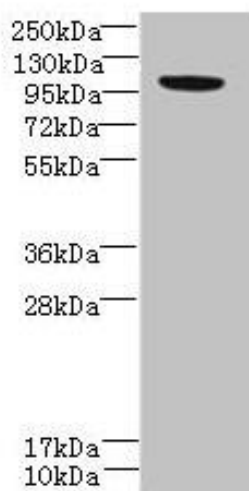
Immunogen:

Recombinant Human Liprin-beta-2 protein (101-400AA).

Storage:

Preservative: 0.03% Proclin 300. Constituents: 50% Glycerol, 0.01M PBS, PH 7.4

Product Images



Western blot. All lanes: PPFIBP2 antibody at 6 μ g/ml + HepG2 whole cell lysate. Secondary. Goat polyclonal to rabbit IgG at 1/10000 dilution. Predicted band size: 99, 87, 84 kDa. Observed band size: 99 kDa.