

PACO39418

---

## Product Information

**Size:**

50ug

**Reactivity:**

Human

**Source:**

Rabbit

**Isotype:**

IgG

**Applications:**

ELISA, IHC

**Recommended dilutions:**

ELISA:1:2000-1:10000, IHC:1:20-1:200

**Protein Background:**

Inhibits potassium fluxes in cells. May regulate Kv1 family channel proteins by retaining a fraction of channels in endomembranes.

**Gene ID:**

KCNRG

**Uniprot**

Q8N5I3

**Synonyms:**

Potassium channel regulatory protein (Potassium channel regulator) (Protein CLLD4), KCNRG, CLLD4

**Immunogen:**

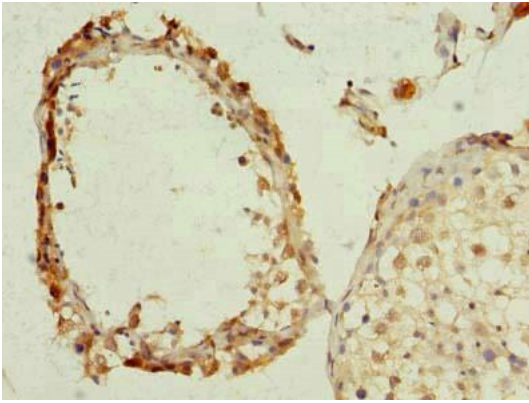
Recombinant Human Potassium channel regulatory protein (1-229AA).

**Storage:**

Preservative: 0.03% Proclin 300. Constituents: 50% Glycerol, 0.01M PBS, PH 7.4

## Product Images

---



Immunohistochemistry of paraffin-embedded human testis tissue using PACO39418 at dilution of 1:100.